

The Evolution of Identity Management in a Web Services World

Justin Taylor
Chief Strategist, Directory Services
Novell, Inc.
jutaylor@novell.com



Novell.

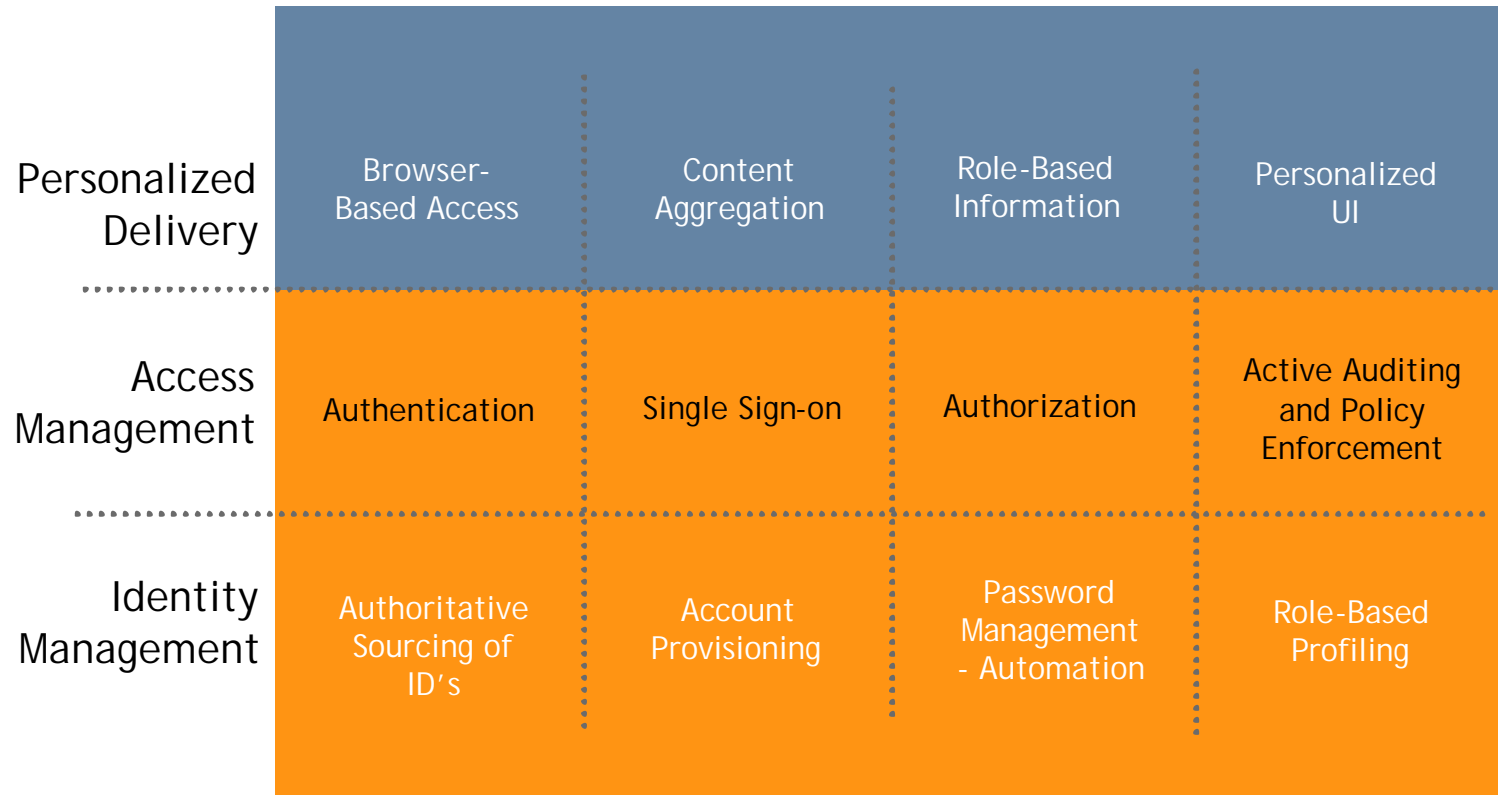


business concerns driving identity management





the components of identity management

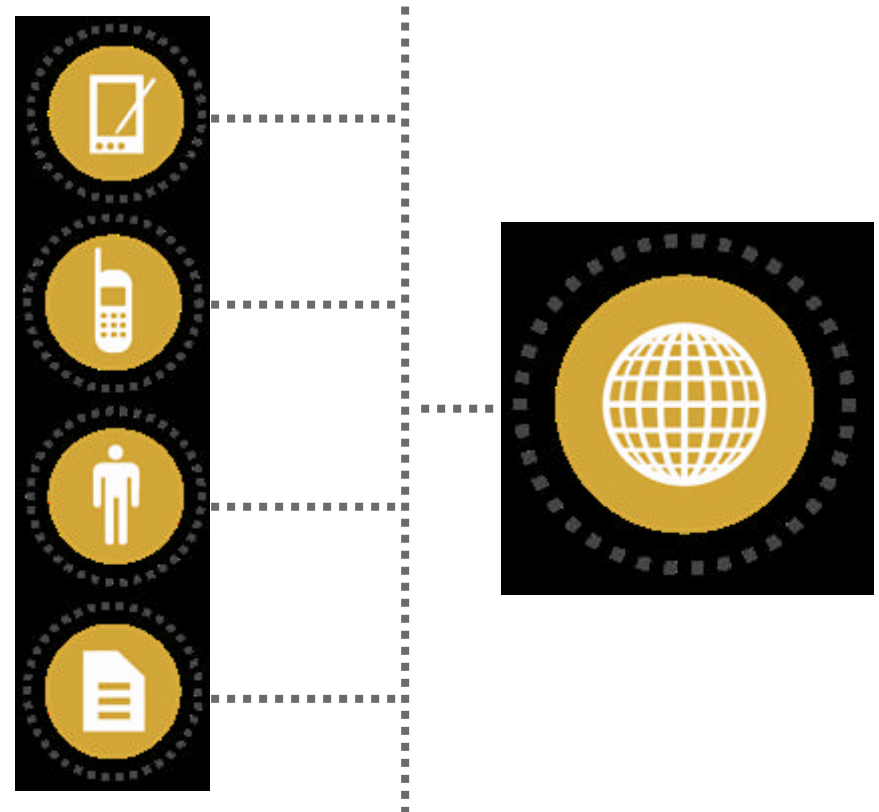




what is an identity?

An identity is a representation of an entity

- User
- Organization
- Computer
- PDA
- Cell phone
- Software



N

what is an identity?

An identity is made up of...

- A principal
- The credentials needed to authenticate and verify the principal
- The attributes that describe the entity
- The roles the entity can occupy



N

it's all about relationships!

Taylor's Law of Directories

The value of a directory is measured by the number of relationships it manages and the new applications that result





how are web services identities different than current identities?

An identity in a Web service world needs to be:

- Consumable by any service
- Consumable over any protocol
- Expandable to include many different types of data
- Capable of fitting into different hierarchies
- Controlled by policy; both business and personal
- Context driven

N context is important!

Main Entry: **con·text**

Pronunciation: 'kän-"tekst

Function: *noun*

Etymology: Middle English, weaving together of words, from Latin *contextus* connection of words, coherence, from *contexere* to weave together, from *com-* + *texere* to weave

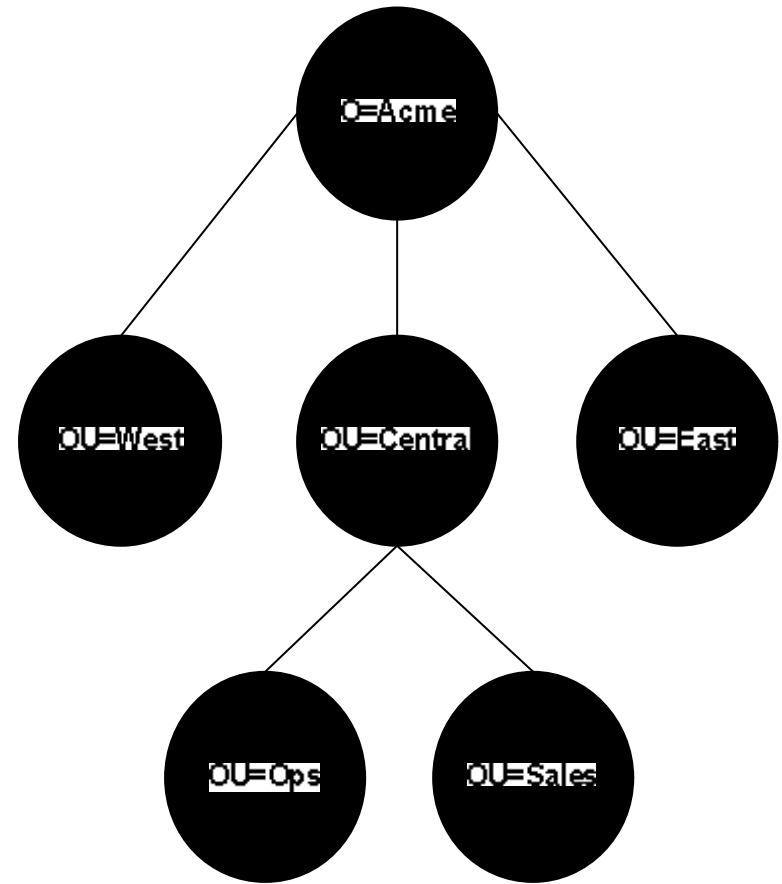
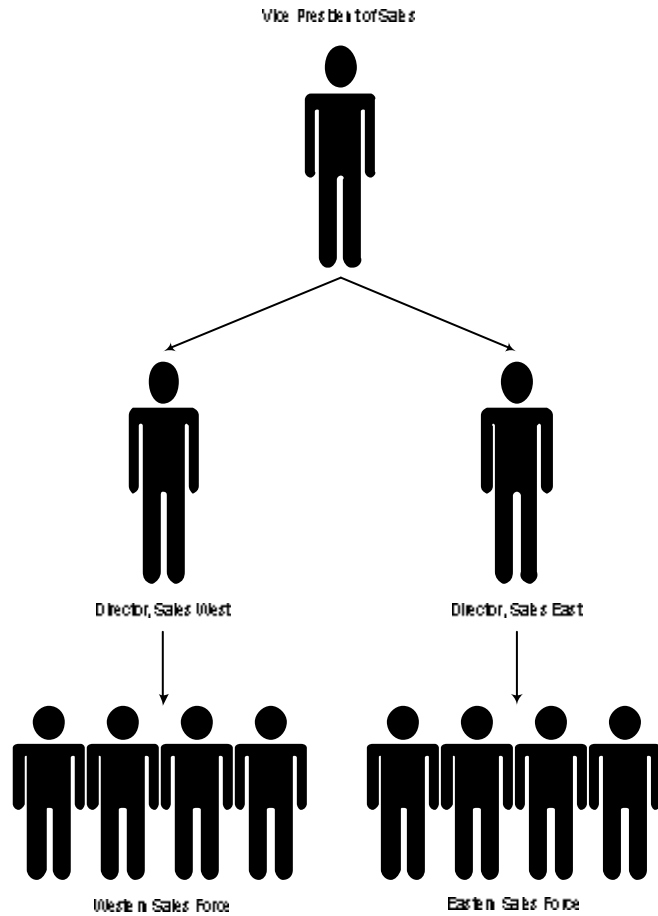
Date: circa 1568

1 : the parts of a discourse that surround a word or passage and ***can throw light on its meaning***

2 : the ***interrelated conditions*** in which something exists or occurs

N

context example



N deployment scenarios are changing



The move to Web services is helping to accelerate the change in deployment scenarios.



Integrated deployments using meta-directories versus rip-and-replace scenarios.



Starting deployments on a departmental basis & later integrating it into the whole.



Taking a federated identity approach to not only the location of the identity principal, but also to where the data actually resides. (I.e. Virtual Directory)

N protocols of choice are changing



New XML based protocols are changing the market place for the better.



XML will replace LDAP as the de-facto standard for identity management over the next 3 to 5 years.



Open standards such as SAML and WS-Security will become the basis for access control solutions.



Technologies such as Liberty will dramatically change the way people view identity.

N conclusion



There are still many challenges to making identity management work in the new Web services world



Still in the infancy of Web services standards (I.e. v1.0 specs). Consolidation still needed.



Technology evolution needs to continue to support Web services protocols.



Certification programs to certify deployment methodologies are still lacking.



Simplicity is key to it all

Novell®