

# Enterprise Architecture – SOA Track Survey

22 October 2008

Enterprise Architecture  
Practitioner's Conference

Munich

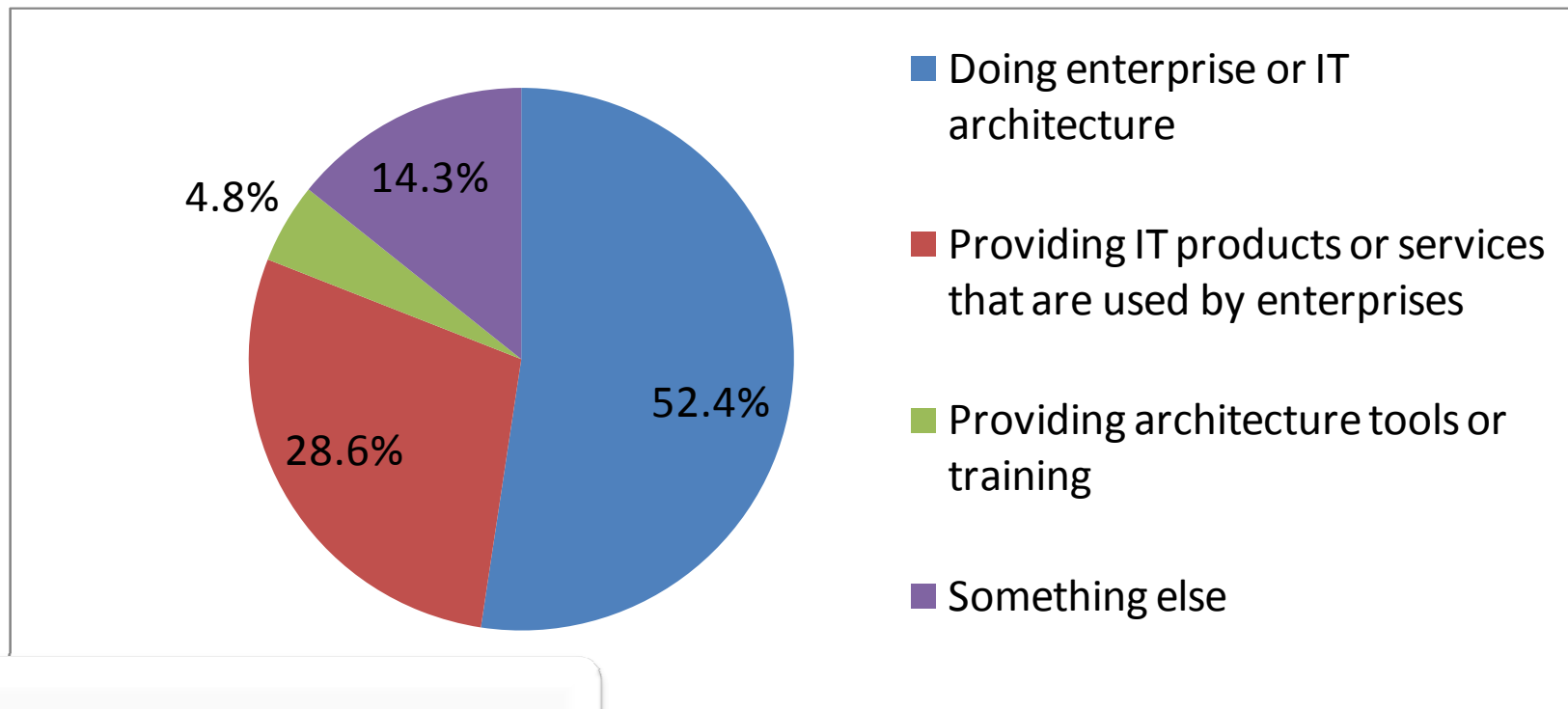


Sponsored by



THE *Open* GROUP  
Making standards work®

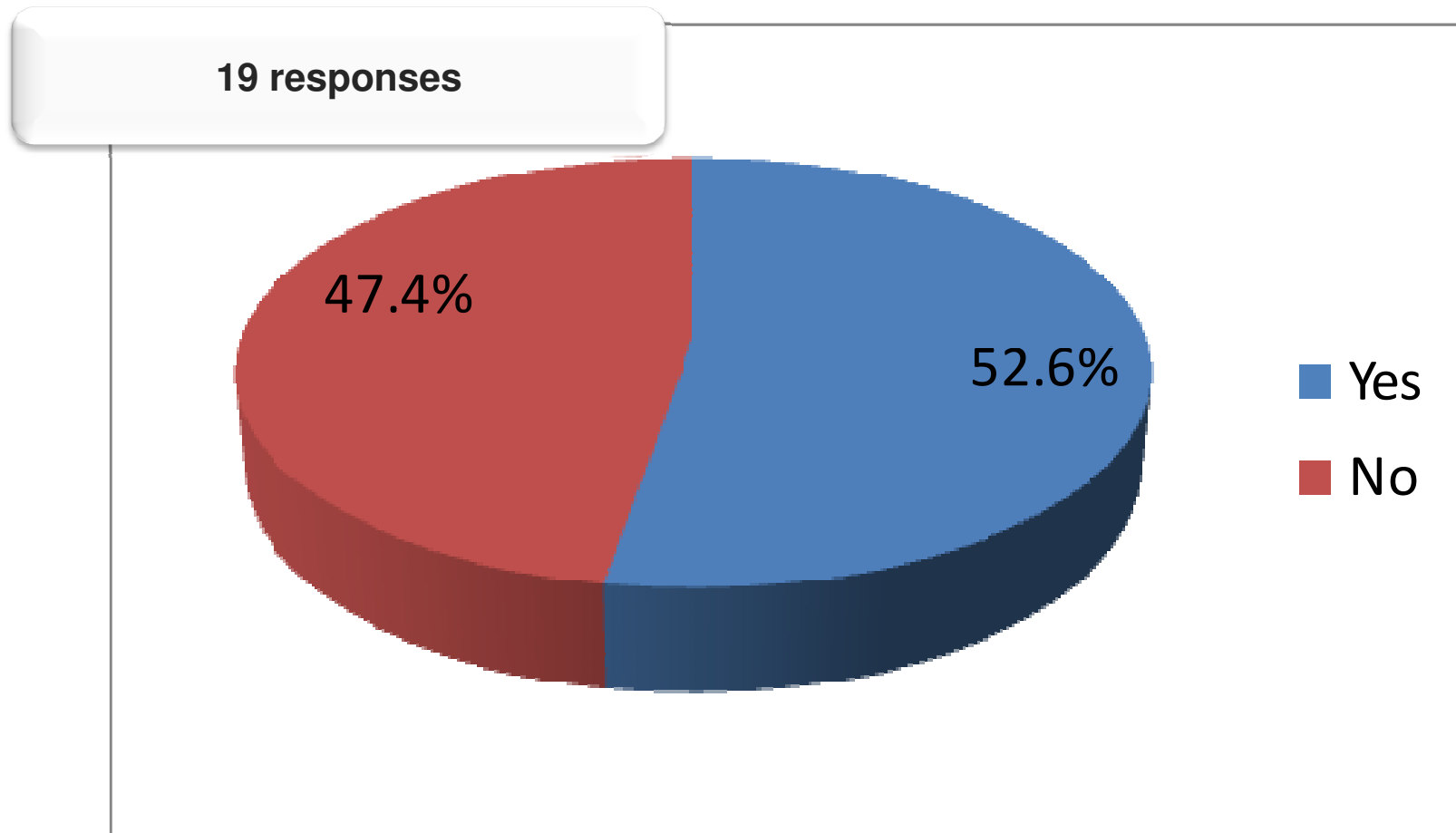
# Main Concern



19 responses

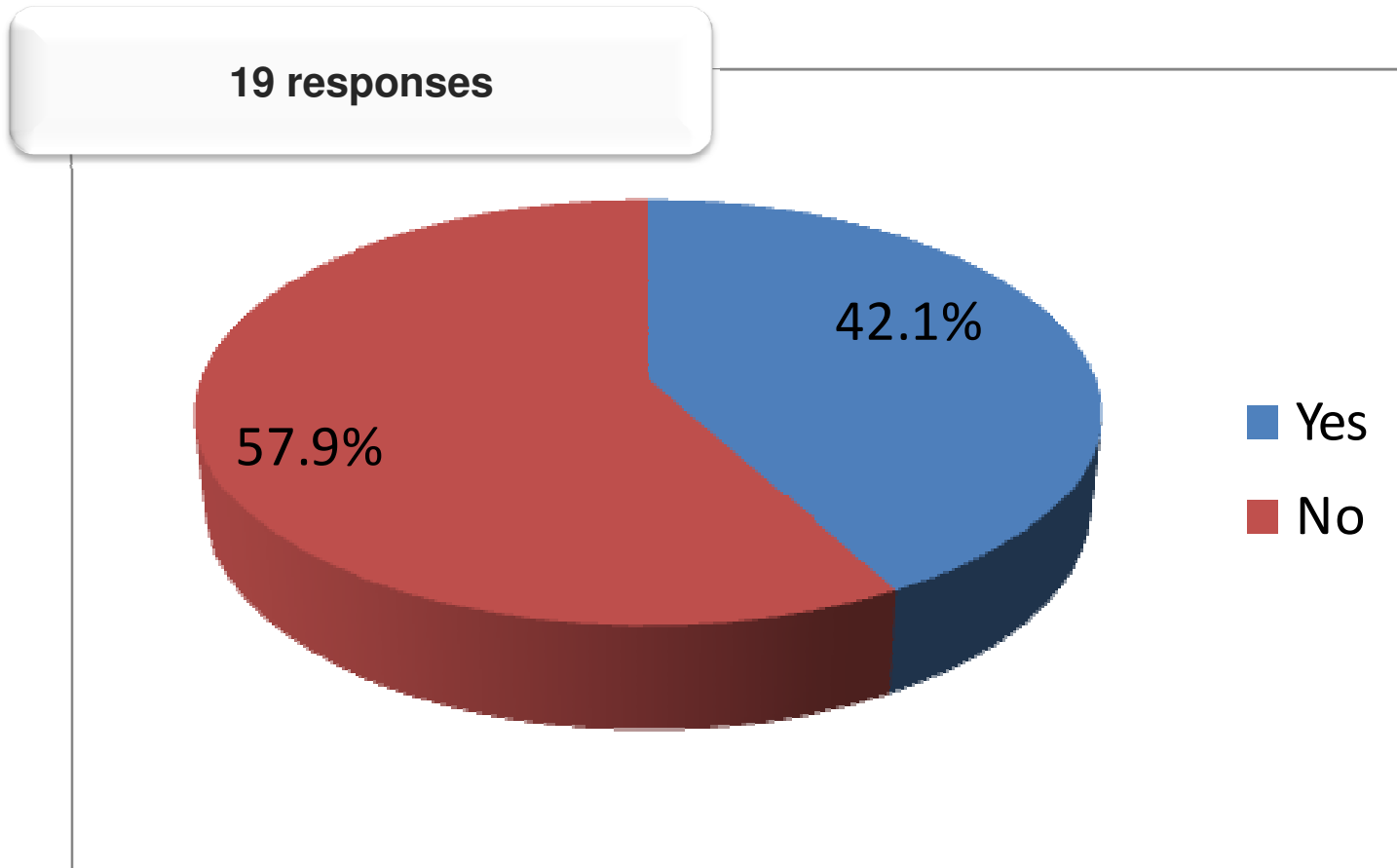
# Involved in a SOA Project

---



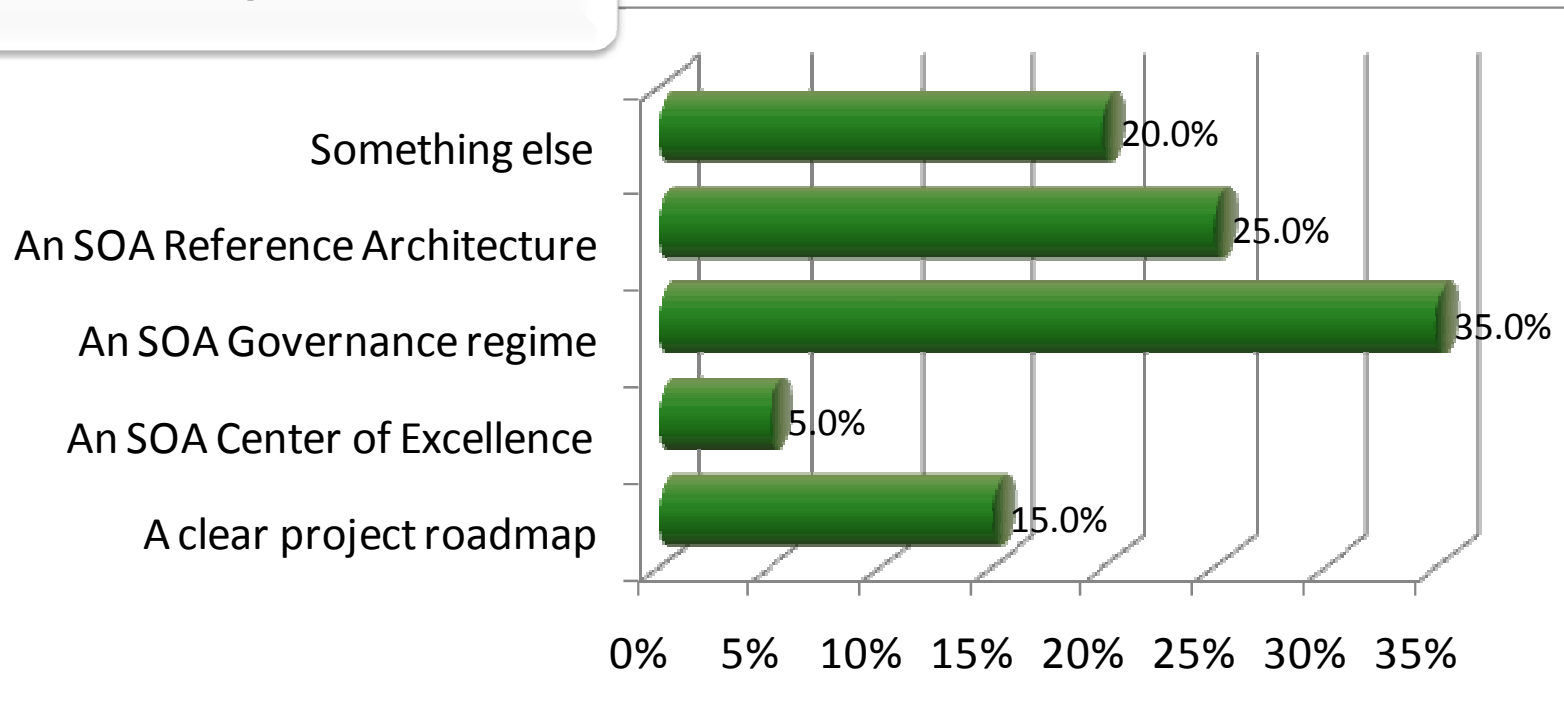
# Involvement in SOA Project with enterprise scope?

---



# Important Factor for enterprise-wide SOA

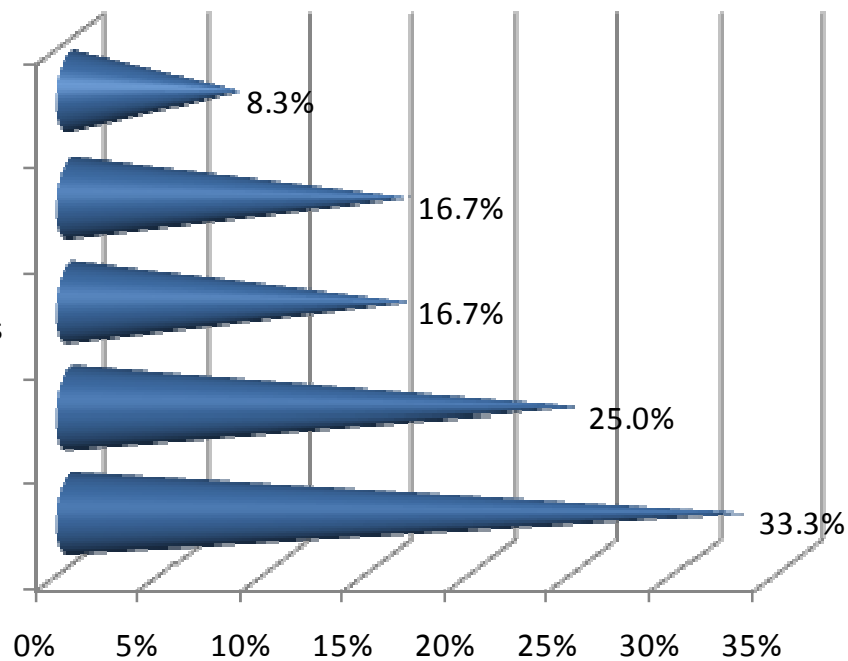
20 responses



# Access Control Approach for SOA

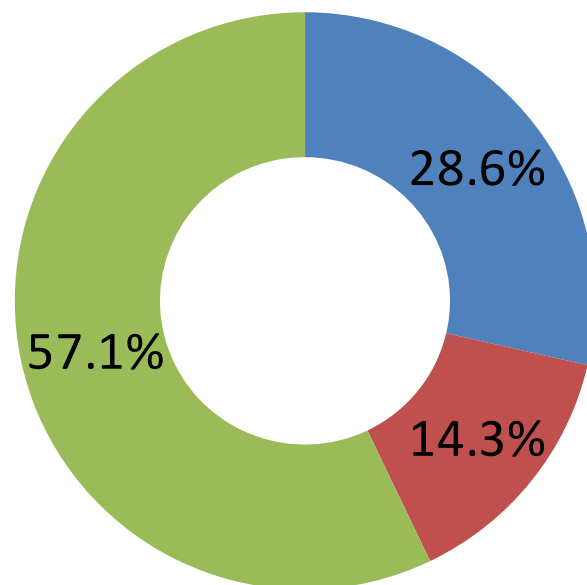
12 responses

- None of these approaches will work - but I know the answer
- None of these approaches will work - its an unsolved problem
- Claims mapped to roles
- We should move to an approach based on claims and rules
- Role-based access control remains the best approach



# Which applies to you?

14 responses



- I am an enterprise architect
- I am an SOA architect
- I am an enterprise architect who uses SOA