



AE inside HP

Mike Baker
Vice President
CTO for IT



Why Adaptive Enterprise Architecture?

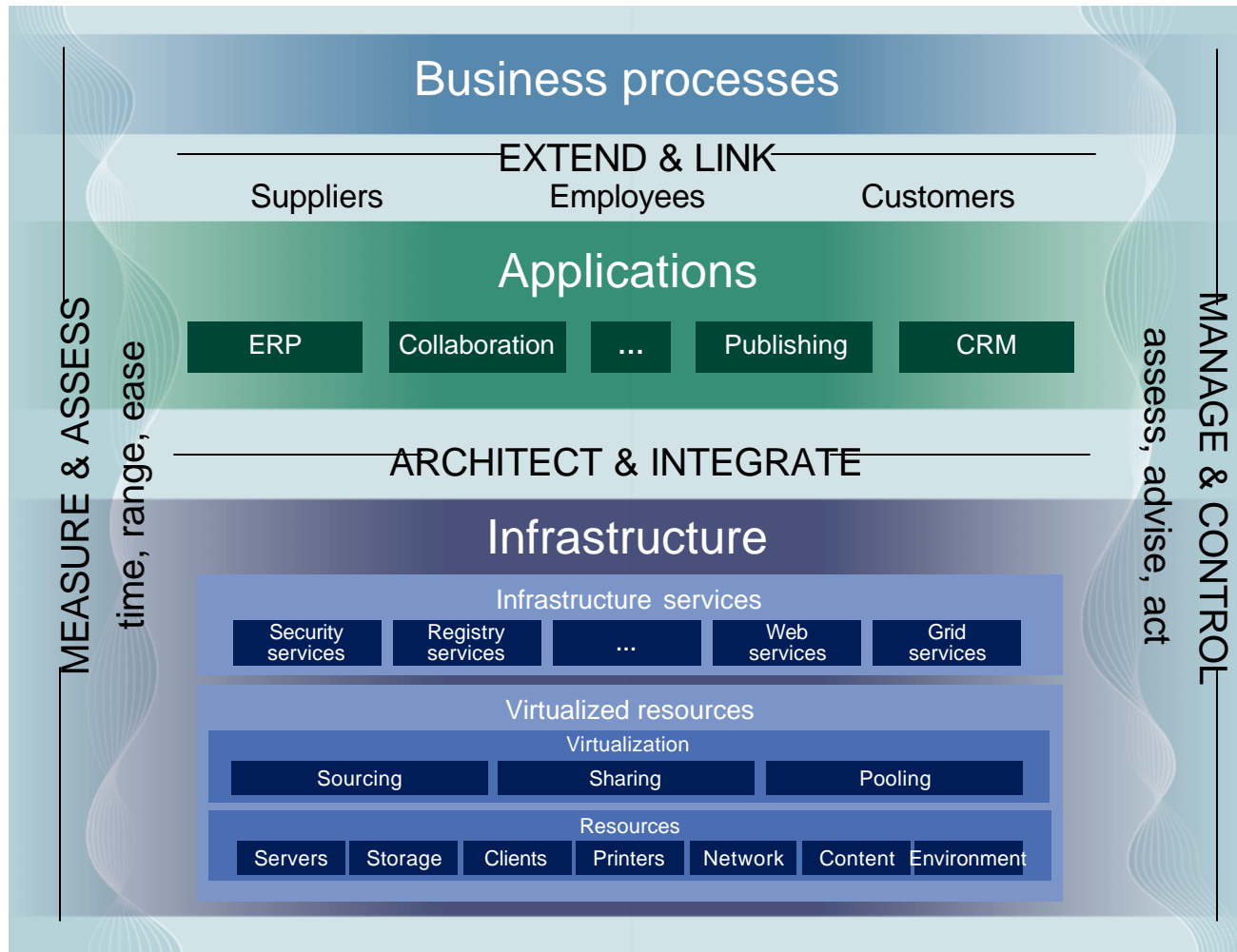
Customers demand A better platform for managing change



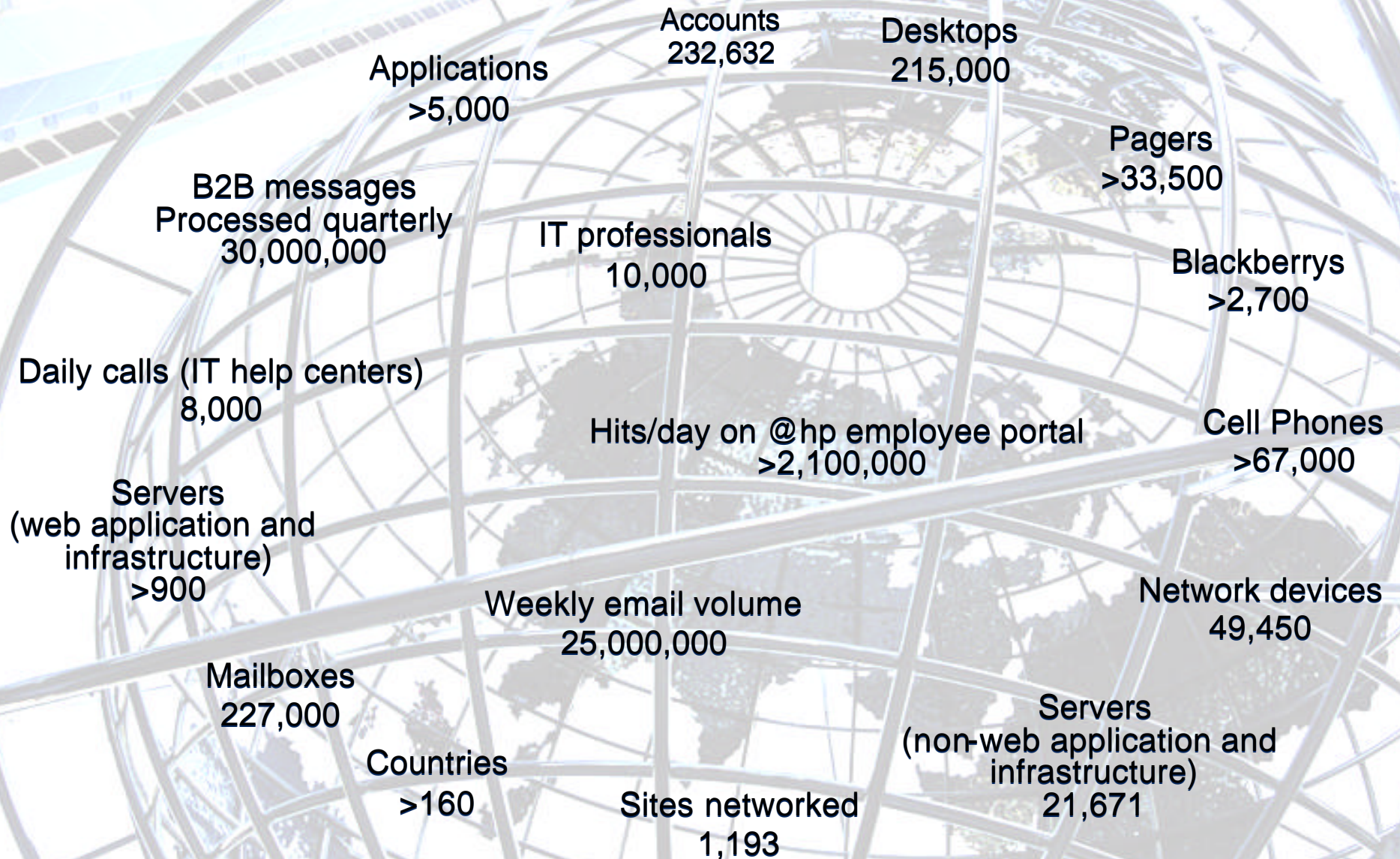
- Brings standardization to the entire IT environment
- Eliminates vertical islands of automation
- Embraces heterogeneity and legacy IT environments
- Uses automation to scale and reduce complexity
- Virtualizes all IT assets
- Helps convert fixed costs to variable costs

HP's Darwin Reference architecture

Elements of an adaptive enterprise architecture

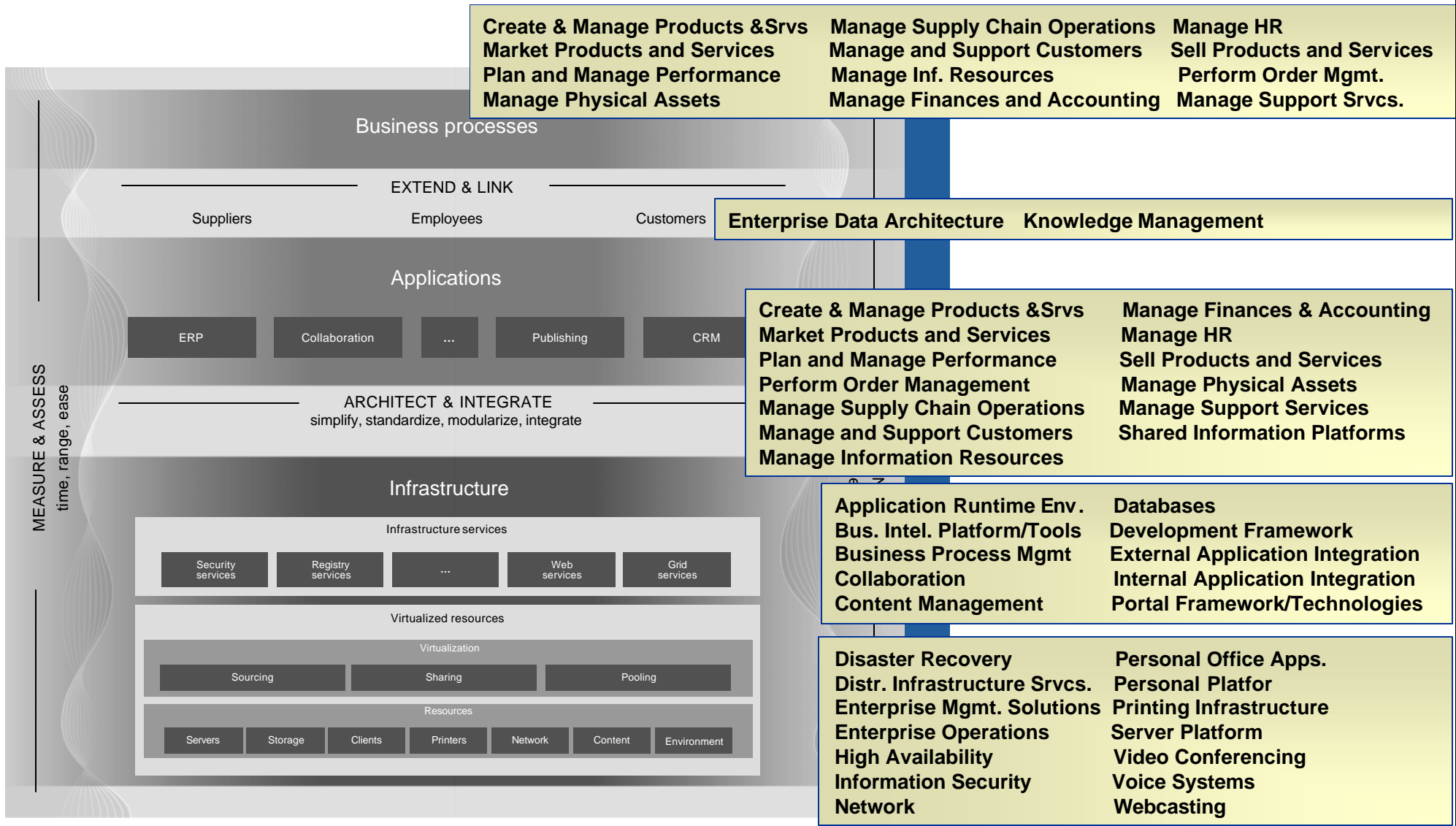


AE Inside HP: Our own best proof point – IT By the Numbers



Darwin in action inside HP

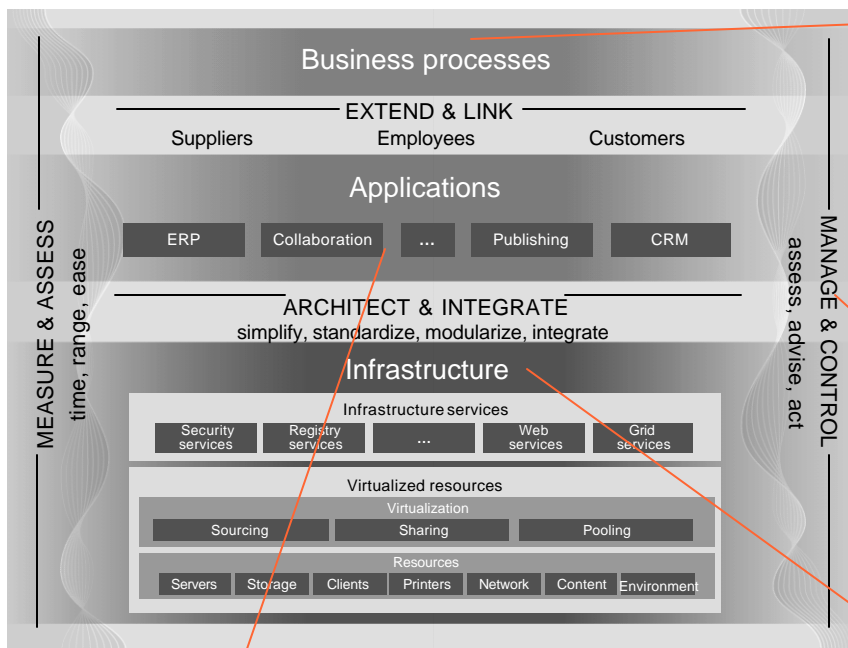
Mapping HP business processes



HP Darwin Reference Architecture



Progress Inside HP since May



Business Processes

- Instantiated 20 IT operation principles and 13 policies based on business strategy
- AE directions & technologies defined for 95% of the current 191 IT subject areas (“domains”)
- Integrated worldwide orders, shipments, revenue & margin into a single finance data warehouse

Management & Control

- Currently have over 12,000 OV agents installed and plan to increase this to 16,000 by the end of 2003.
- UDC in Palo Alto – 2 more implementations planned for early next year in Houston and Stockholm

Infrastructure Consolidation

- Completed 50% of planned global site consolidations
- Achieved significant savings through consolidation of vendor relationships
- Implemented network core backbone - 90% complete, \$8.8M savings

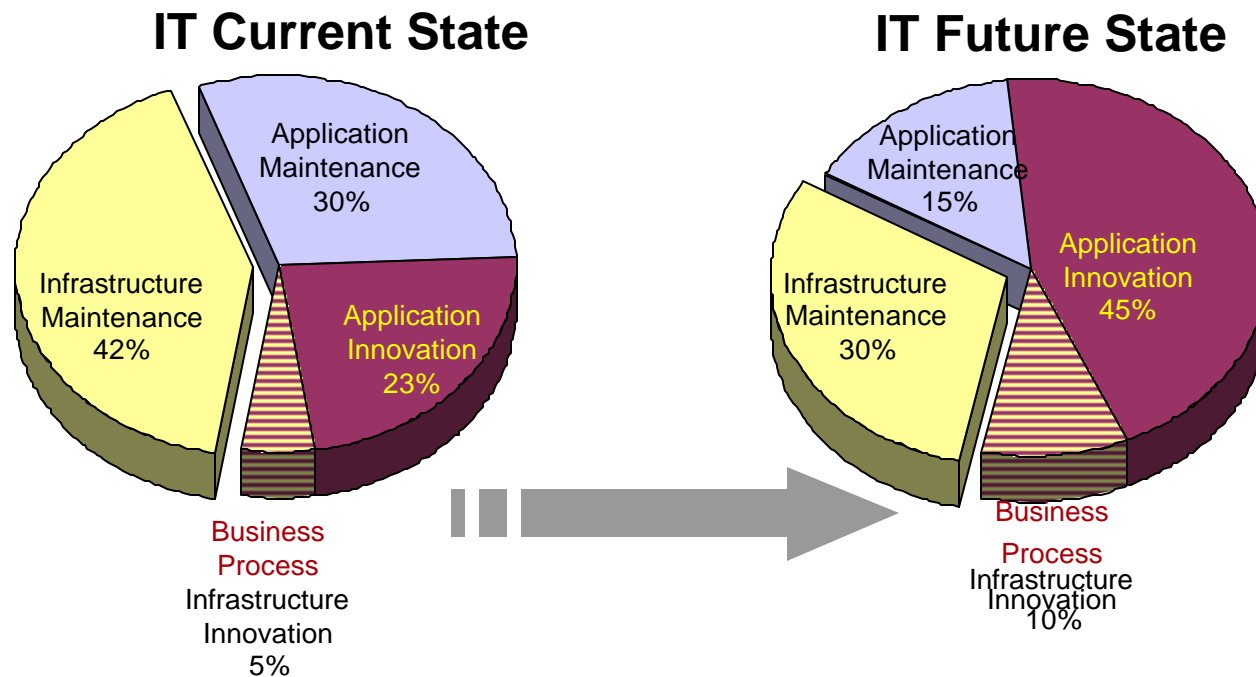
Application Optimization

- Retired 622 apps & 1372 instances in FY03 (as of August) driven by business process decisions – this alone equaled annual savings of > \$18M

How AE inside translates into real value for HP



- Real simplification of IT environment
- Radical reduction of IT infrastructure operating cost
- Infrastructure completely renewed every 4 years
- Innovation instead of maintenance
- Automating management vs adding people



Architecture enables business strategies

HP Strategy

Business market strategy

- Best RoIT by leveraging HP's portfolio of products & services

Consumer market strategy

- Simple & rewarding experiences

World-class cost structures

Focused innovation

Architecture Strategies

A mature, active IT enterprise architecture drives RoIT

IT solutions are presented as loosely-coupled services that are simple & adaptable

A reduced & radically simplified IT portfolio drives low cost investments

Solutions & core infrastructure are being renewed continuously

'04 – '06 Architecture Objectives

- Enterprise-wide standardization & collaboration
- Service-oriented, loosely-coupled architectures everywhere
- Radical reduction of the application portfolio enabling best TCE
- Standardized messaging for the real-time enterprise
- Shared application infrastructure platforms
- Perpetual optimization of infrastructure elements
- 60% reduction goal of infrastructure "units"



i n v e n t