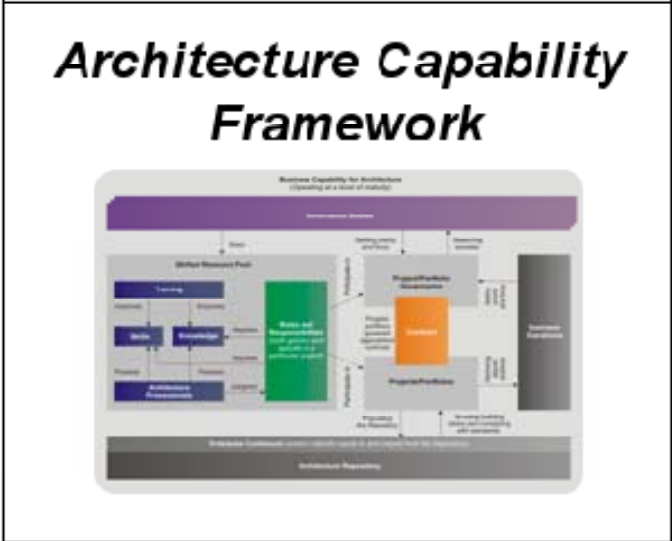
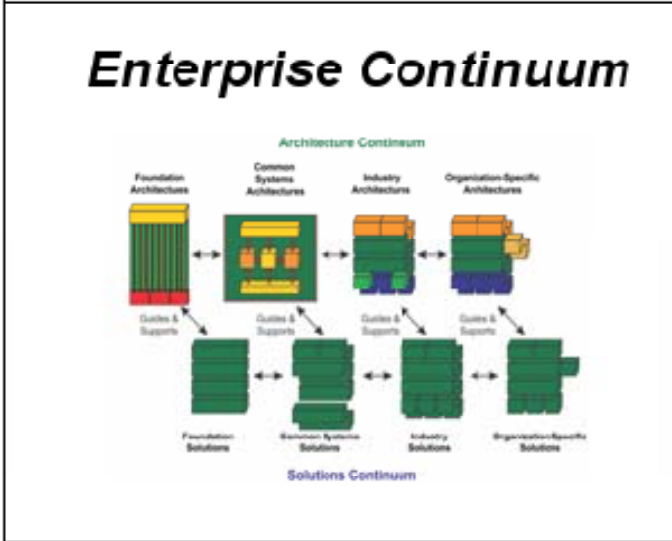
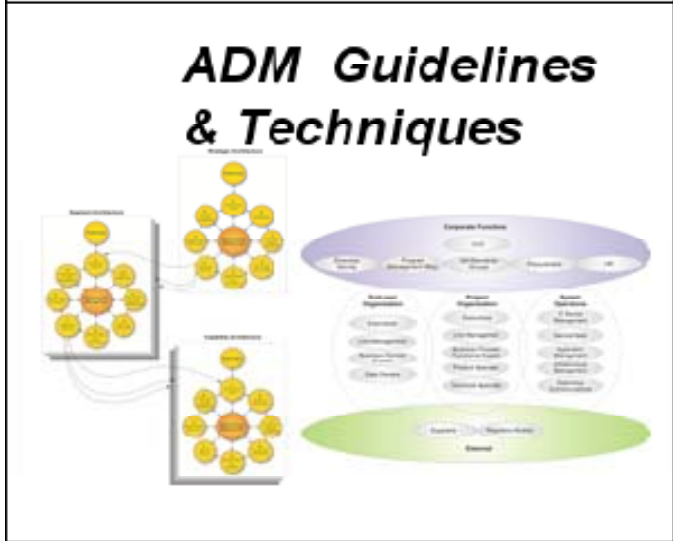
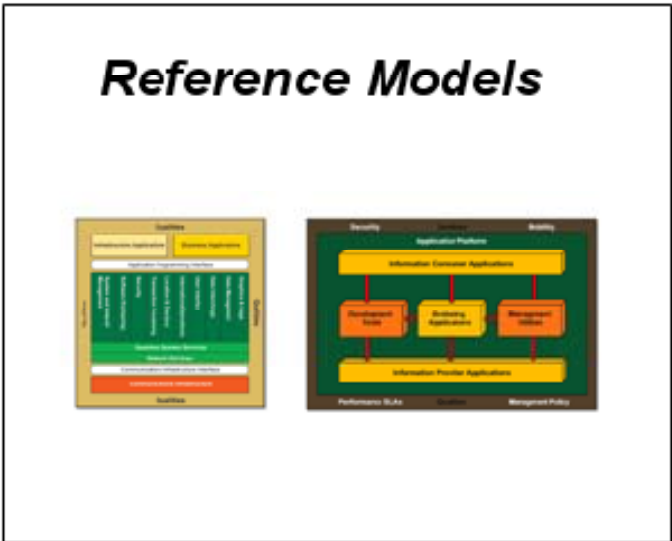
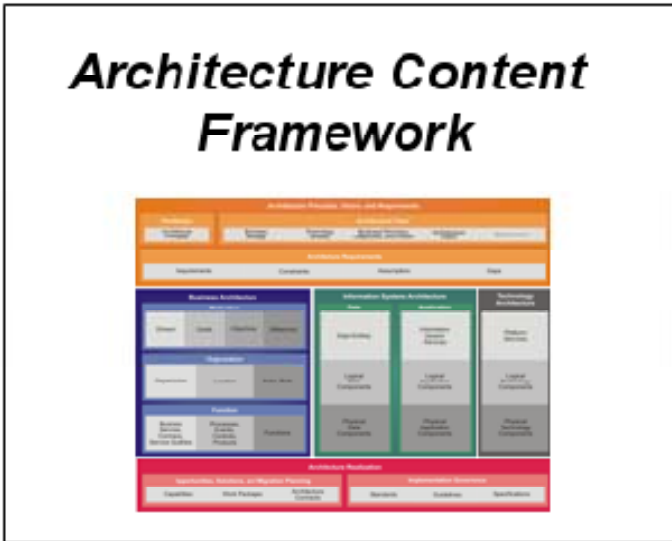
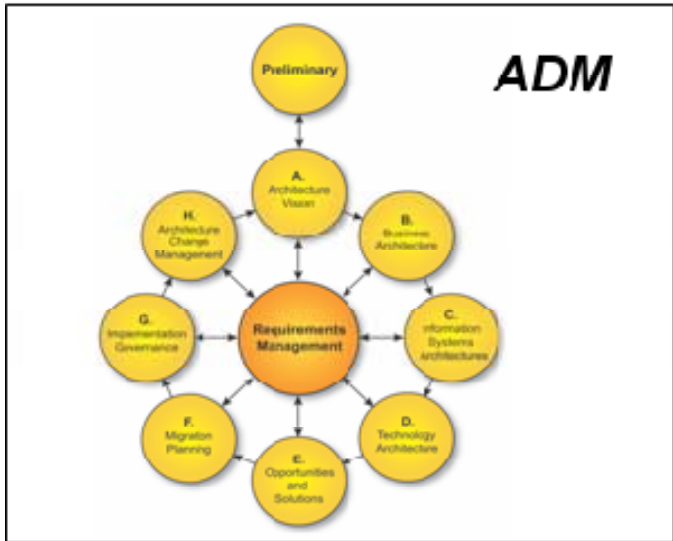

The ArchiMate[®] Forum

Henry Franken

Toronto, July 20th, 2009

ArchiMate® adds value to TOGAF™



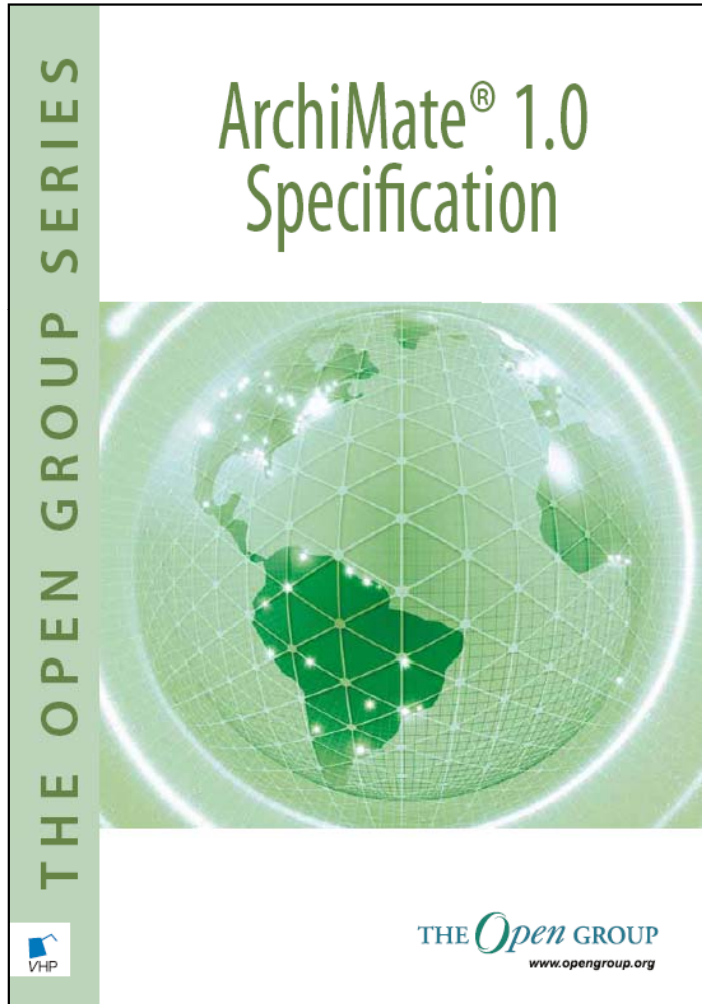
By providing one language...



ArchiMate[®]

THE *Open* GROUP

The ArchiMate® 1.0 Specification



- ❑ Open & independent modelling language for EA
- ❑ Covers TOGAF-ADM
- ❑ In use at many end-user organizations
- ❑ Supported by different tools vendors, consultancy firms & education parties.
- ❑ A true open standard

ArchiMate characteristics

- ❑ Business, application and technology layer
- ❑ Domain models for:
 - product, process, organisation, application, information, data, technology.
- ❑ But also:
 - their interrelationships!
 - Automatic view and analysis mechanisms!
- ❑ Service paradigm in all layers
- ❑ Result: Easier communication & collaboration with stakeholders through clear models.

- ❑ Also starting point for MDA:
 - Implementation relationships to BPMN, UML

Forum deliverables & roadmap

- Currently
 - ArchiMate 1.0 = launched in April!
 - Case stories and Testimonials already available
 - Certification criteria and procedures in review
- Q3/2009
 - Certification criteria and procedures being finalized
 - Produce study guide & white papers with cases
 - White paper on TOGAF 9 & ArchiMate integration
 - Collect requirements for update to ArchiMate 2.0
 - Communicate and collaborate!
- Q3/2009
 - Finalize study guide
 - Communicate and collaborate!

Stream: Modelling and Tools for EA

- ❑ Wednesday (July 22), 9.00-12.30
- ❑ Presentation:
 - ArchiMate adding value to TOGAF

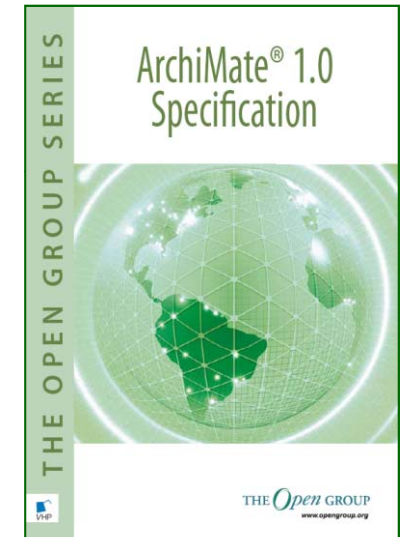
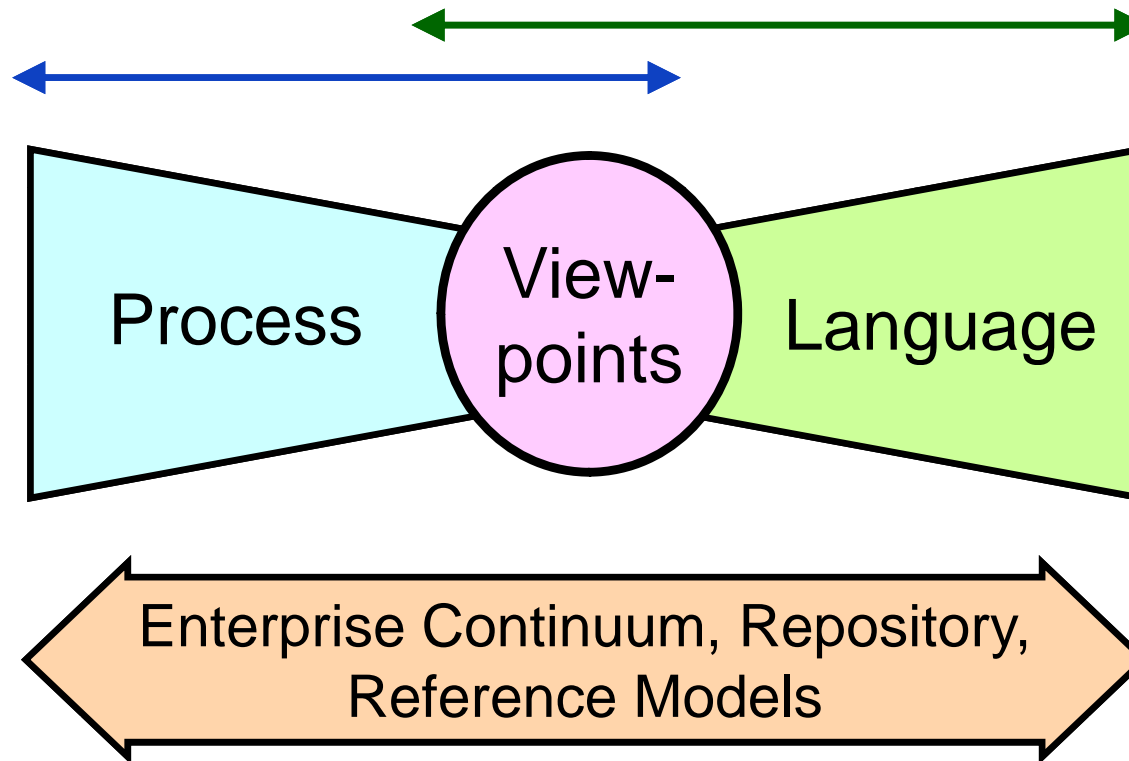
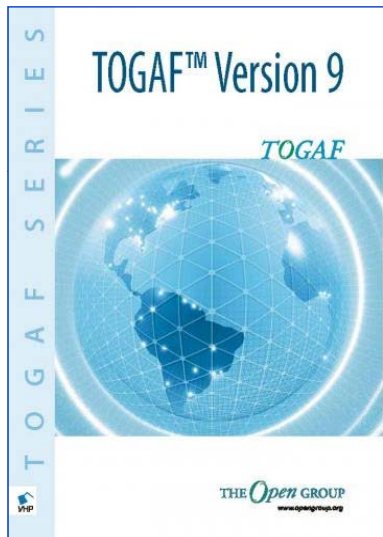
ArchiMate Forum: open session

- ❑ Wednesday (July 22), 14.00-16.30
- ❑ Programme:
 - Introducing The ArchiMate Forum
 - Tutorial ArchiMate
 - Case Experiences Using ArchiMate
 - Enterprise Architecture Modelling, Visualization and Analysis with ArchiMate and TOGAF
 - Roadmap and certification progress

ArchiMate[®] adds value to TOGAF[™]

TOGAF

ArchiMate



ArchiMate[®]

THE *Open* GROUP