

Infosys®

Win in the flat world

# Role of the IT architect in a Global Environment

Sohrab Kakalia

Head of Technology Consulting

Infosys Technologies Limited

---

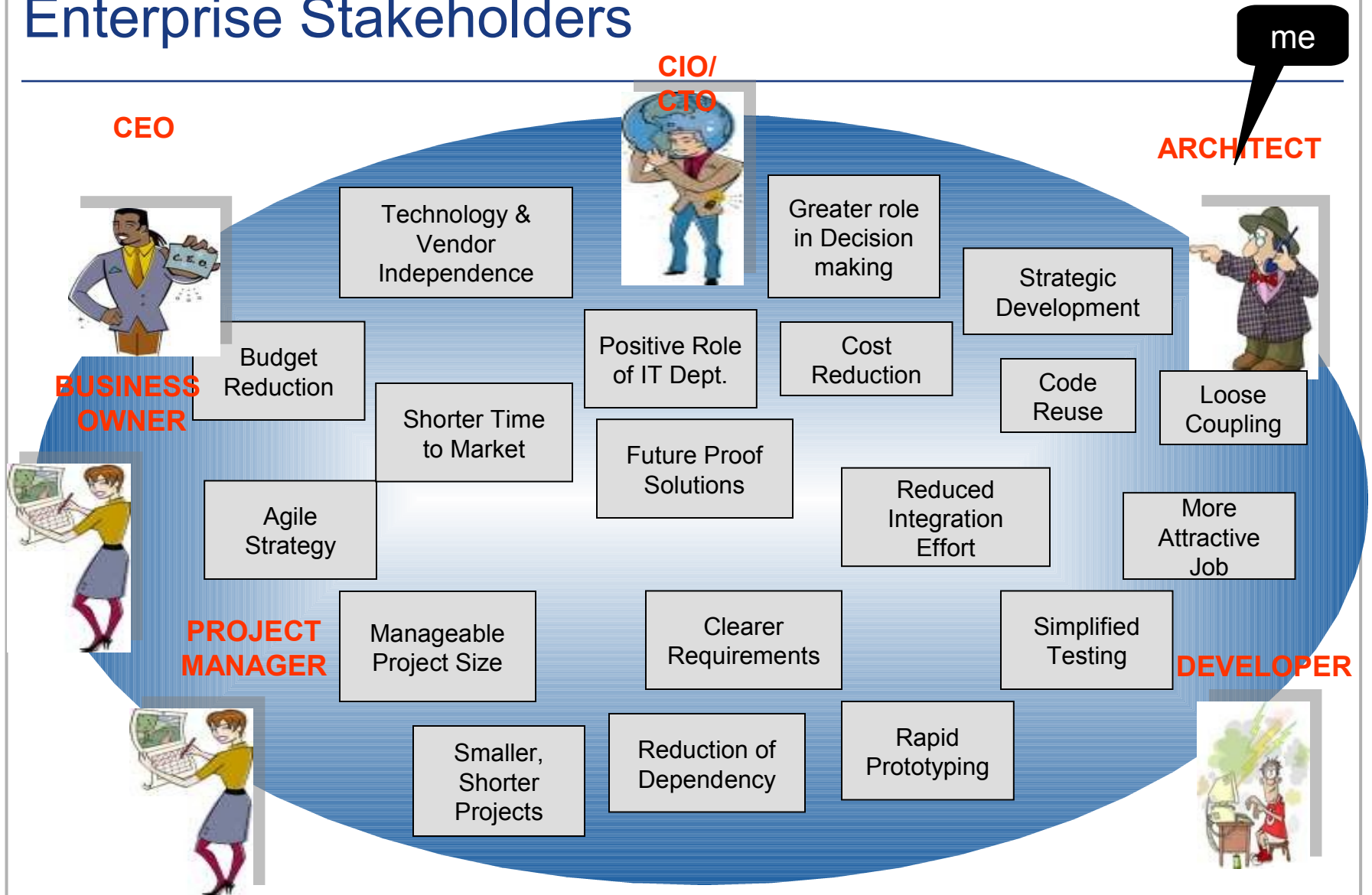
IT architecture Practitioners Conference  
Mumbai

Feb 2007



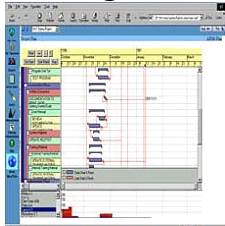
**“This is a major project of utmost importance, but it has no budget, no guidelines, no support staff, and it’s due in 15 minutes. At last, here’s your chance to really impress everyone!”**

# Enterprise Stakeholders



# The Architect Role is evolving

**Project Mgmt.**



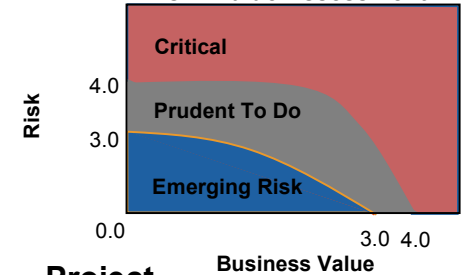
**Process Mgmt.**



**Vendor Mgmt.**



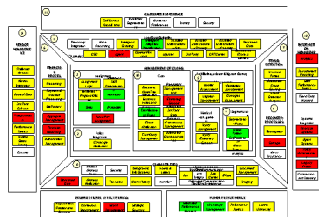
**2007 Infrastructure Product Portfolio Risk / Value Assessment**



**Innovation & Trends**



**Strategy & Roadmaps**



**Application Portfolio Management**



**Dashboard**



**Service Management**

**Work Intake**



**Project Portfolio Mgmt.**



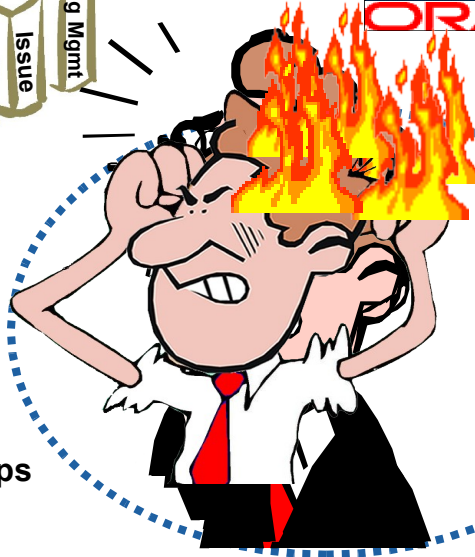
**Relationship Mgt**



**Budget**



**Resource Mgmt.  
Employee Development**

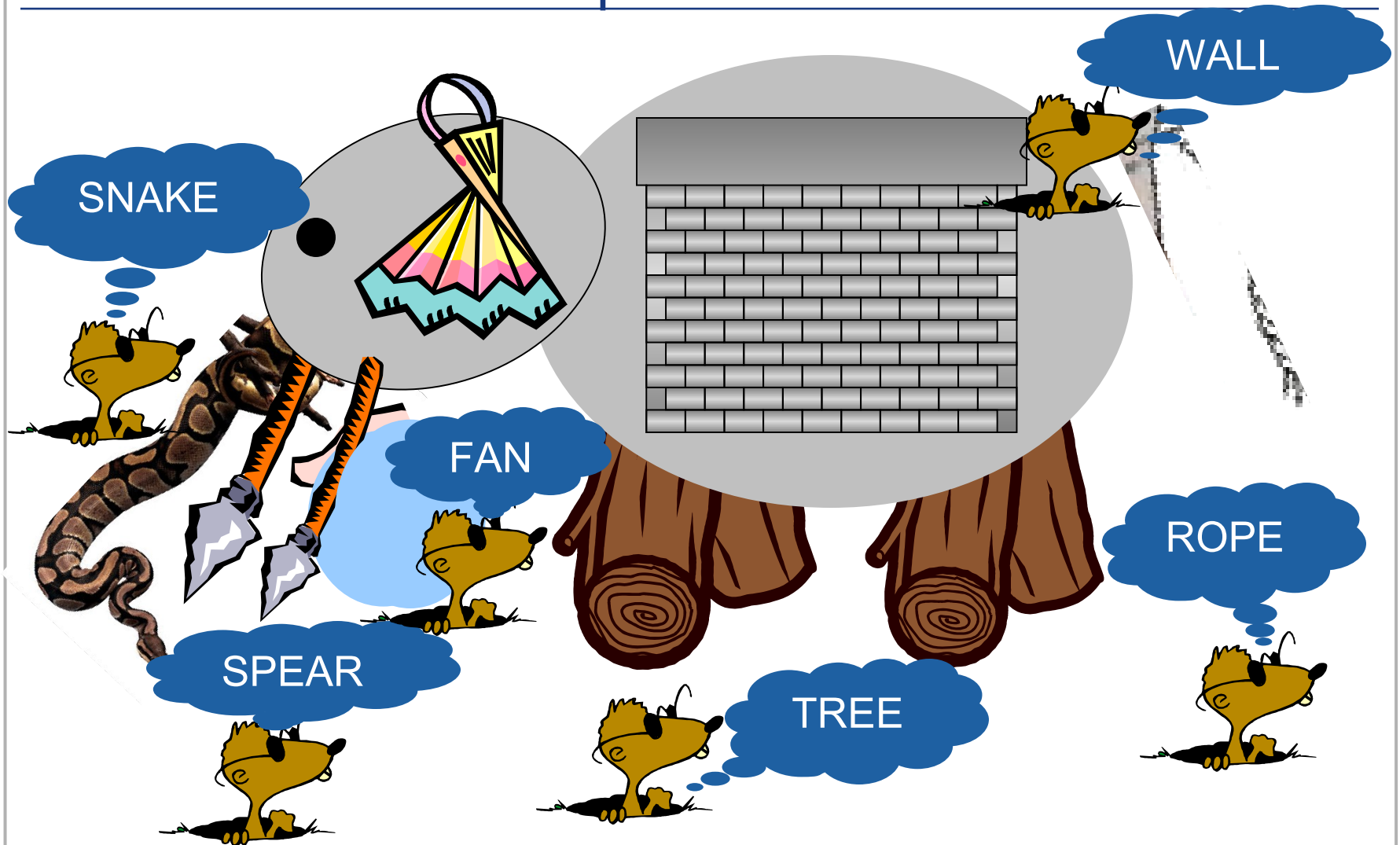


*Courtesy Karl Gouverneur, CTO, Northwestern Mutual*

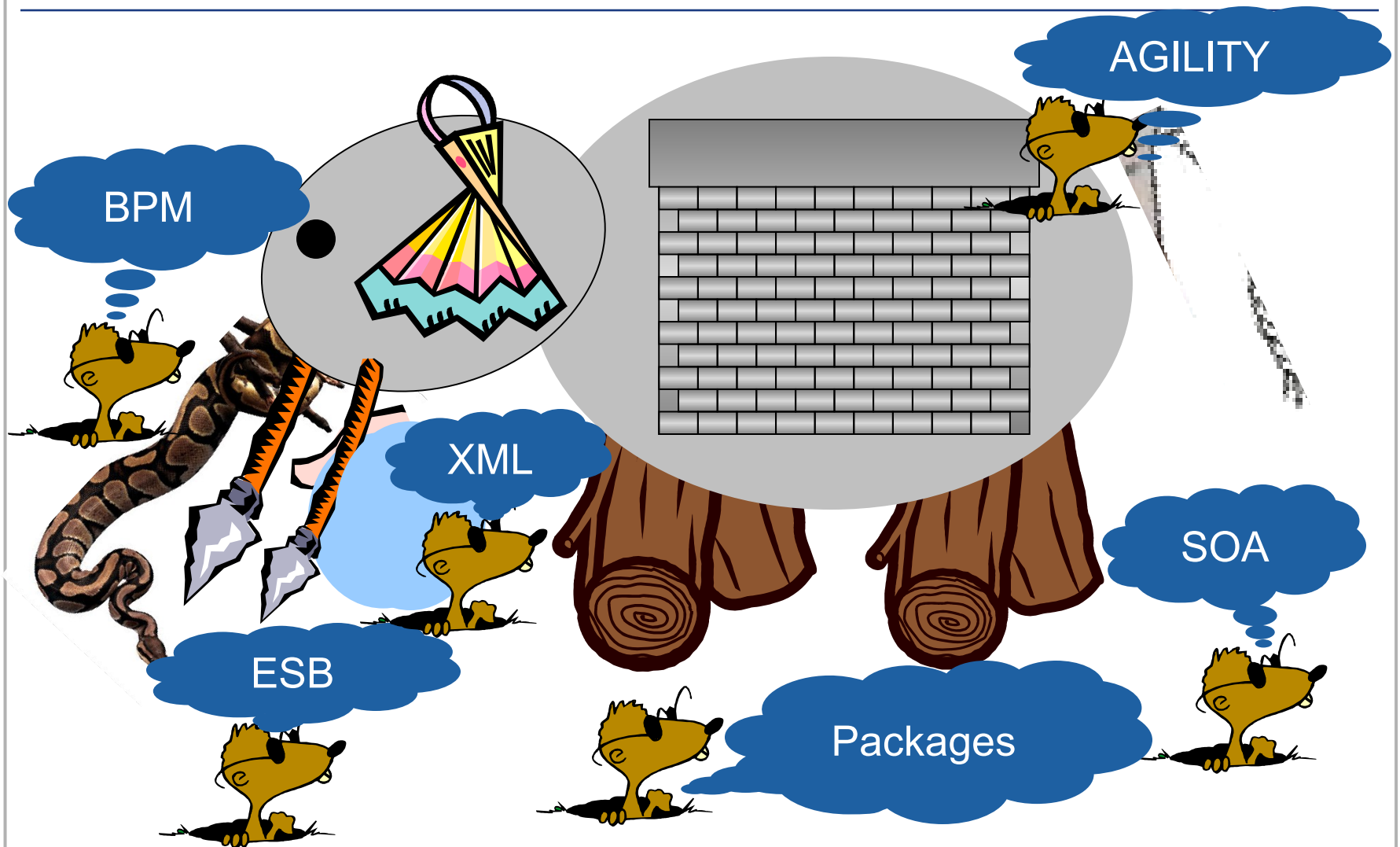


**“Either lead, follow, or get out of the way.  
But never try to do all three at the same time!”**

# Discovering the organization reminds one of The Blind Men and the Elephant



# EA: The Services Elephant?



# Architect's role is beyond that of IT alone

Starting 1995, CIOs have a seat at the board

80% of companies surveyed rely on IT for their business.  
i.e. they would not survive without IT

Gartner Research

Yet, less than 3% of companies understand or  
know what their complete IT portfolio is!

Gartner Research

Understanding or discovering the real elephant is where the strategy starts

Unlike conventional development cycles, in strategic initiatives, about 40% of  
the initial time is spent in strategy discussion and uncovering assets



# Architecture roles

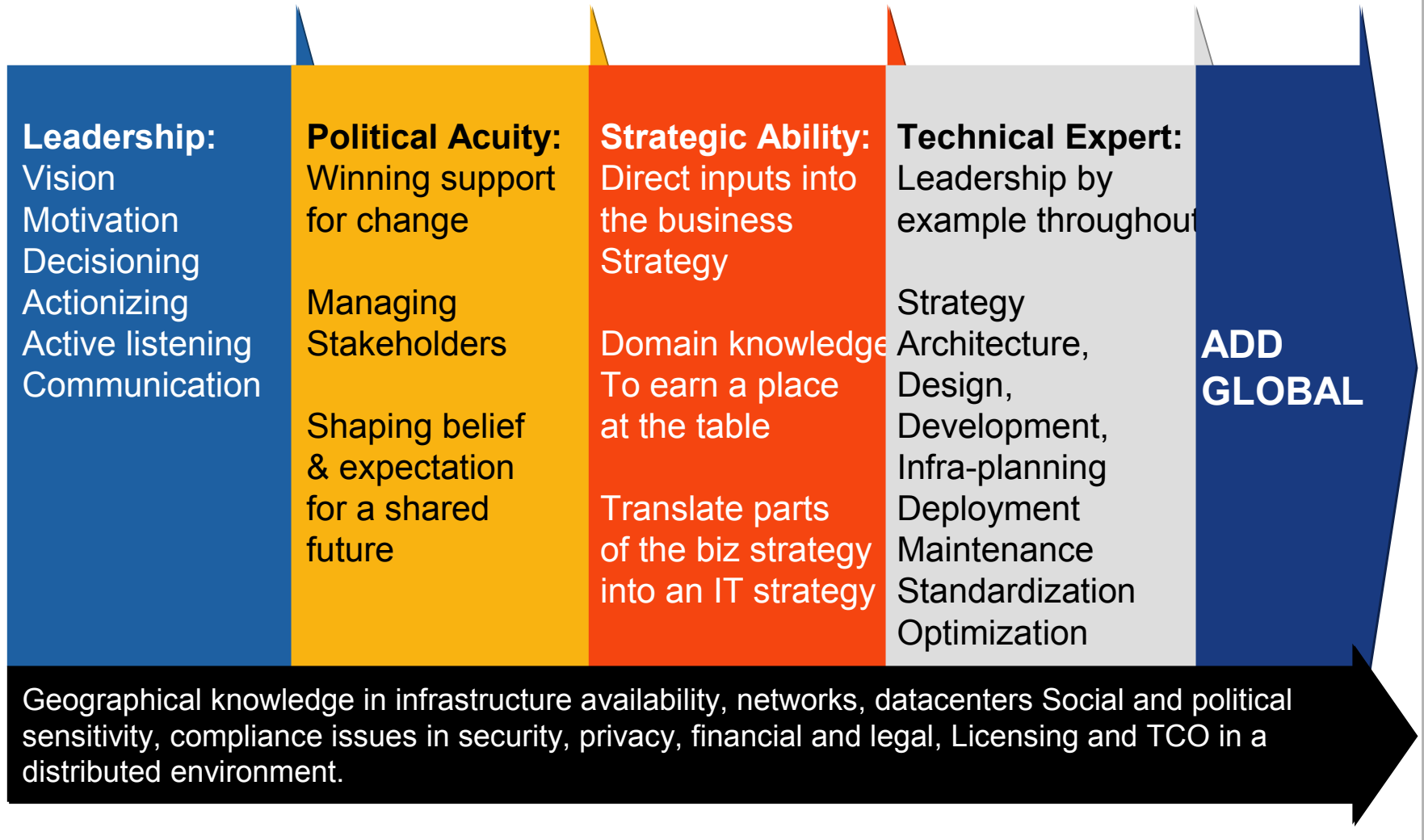
	① Technical	② Solutions	③ Portfolio	④ Business																																
<b>Scope</b>	<ul style="list-style-type: none"> <li>• Creating infrastructure road maps and standards</li> <li>• Introducing new technologies to the enterprise</li> <li>• Providing integration and security services to project teams</li> </ul>	<ul style="list-style-type: none"> <li>• Standardizing development platforms, tools, and languages</li> <li>• Providing design engineering services to project teams</li> </ul>	<ul style="list-style-type: none"> <li>• Maintaining global applications inventories</li> <li>• Retiring applications to simplify the systems portfolio</li> </ul>	<ul style="list-style-type: none"> <li>• Mapping interdependencies between processes, applications, data, and technologies</li> <li>• Partnering with the business to optimize information flows and processes</li> </ul>																																
<b>Average Size of Central Architecture Groups (FTEs)</b>	<table border="1"> <tr><th>FTEs</th><th>Percentage</th></tr> <tr><td>&lt; 10</td><td>40%</td></tr> <tr><td>11-30</td><td>30%</td></tr> <tr><td>&gt; 30</td><td>30%</td></tr> </table>	FTEs	Percentage	< 10	40%	11-30	30%	> 30	30%	<table border="1"> <tr><th>FTEs</th><th>Percentage</th></tr> <tr><td>&lt; 10</td><td>17%</td></tr> <tr><td>11-30</td><td>44%</td></tr> <tr><td>&gt; 30</td><td>39%</td></tr> </table>	FTEs	Percentage	< 10	17%	11-30	44%	> 30	39%	<table border="1"> <tr><th>FTEs</th><th>Percentage</th></tr> <tr><td>&lt; 10</td><td>30%</td></tr> <tr><td>11-30</td><td>20%</td></tr> <tr><td>&gt; 30</td><td>50%</td></tr> </table>	FTEs	Percentage	< 10	30%	11-30	20%	> 30	50%	<table border="1"> <tr><th>FTEs</th><th>Percentage</th></tr> <tr><td>&lt; 10</td><td>22%</td></tr> <tr><td>11-30</td><td>22%</td></tr> <tr><td>&gt; 30</td><td>46%</td></tr> </table>	FTEs	Percentage	< 10	22%	11-30	22%	> 30	46%
FTEs	Percentage																																			
< 10	40%																																			
11-30	30%																																			
> 30	30%																																			
FTEs	Percentage																																			
< 10	17%																																			
11-30	44%																																			
> 30	39%																																			
FTEs	Percentage																																			
< 10	30%																																			
11-30	20%																																			
> 30	50%																																			
FTEs	Percentage																																			
< 10	22%																																			
11-30	22%																																			
> 30	46%																																			
<b>Reporting Relationships</b>	<table border="1"> <tr><th>Role</th><th>Percentage</th></tr> <tr><td>CTO</td><td>22%</td></tr> <tr><td>CIO</td><td>78%</td></tr> </table>	Role	Percentage	CTO	22%	CIO	78%	<table border="1"> <tr><th>Role</th><th>Percentage</th></tr> <tr><td>CIO</td><td>90%</td></tr> <tr><td>CTO Applications</td><td>4%</td></tr> <tr><td>CTO</td><td>4%</td></tr> <tr><td>CFO</td><td>2%</td></tr> </table>	Role	Percentage	CIO	90%	CTO Applications	4%	CTO	4%	CFO	2%	<table border="1"> <tr><th>Role</th><th>Percentage</th></tr> <tr><td>CIO</td><td>95%</td></tr> <tr><td>CTO</td><td>5%</td></tr> </table>	Role	Percentage	CIO	95%	CTO	5%	<table border="1"> <tr><th>Role</th><th>Percentage</th></tr> <tr><td>CIO</td><td>88%</td></tr> <tr><td>CEO</td><td>12%</td></tr> </table>	Role	Percentage	CIO	88%	CEO	12%				
Role	Percentage																																			
CTO	22%																																			
CIO	78%																																			
Role	Percentage																																			
CIO	90%																																			
CTO Applications	4%																																			
CTO	4%																																			
CFO	2%																																			
Role	Percentage																																			
CIO	95%																																			
CTO	5%																																			
Role	Percentage																																			
CIO	88%																																			
CEO	12%																																			
<b>Prevalence Range (Percentage of Survey Respondents)</b>	30-35%	25-30%	20-25%	15-20%																																

n = 85.

Source: Enterprise Architecture Executive Council research.

Courtesy Karl Gouverneur, CTO, Northwestern Mutual

# Dimensions of a Enterprise architect



## Global Needs

- Understanding standards (retail, insurance, financial, mobile)
- Financial and operational compliance (eg China)
- Inter-operability
- Data/ information quality
- Readiness of M&A

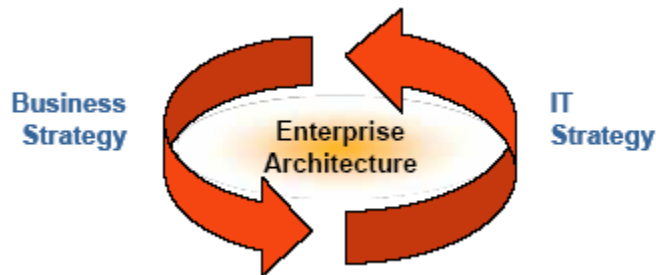
## Optimizing

- Global resource optimization (Data centers and s/w dev)
- Leveraging the global talent pool with appropriate project planning

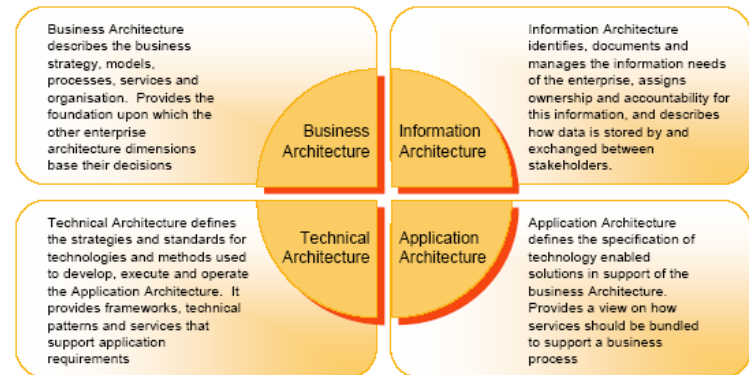
## Understanding

- Cultures
- Adoption curve of technology worldwide
- Laws of the land

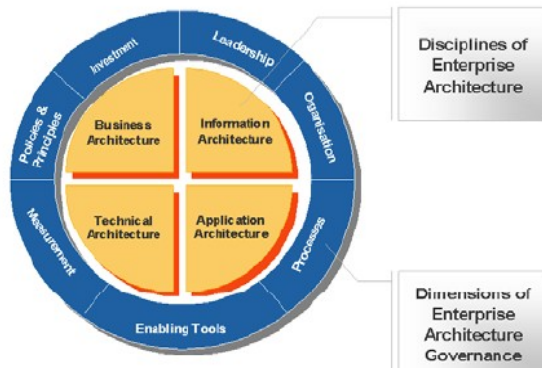
# Enterprise Architecture Governance and Tools at Infosys for smoother transformation



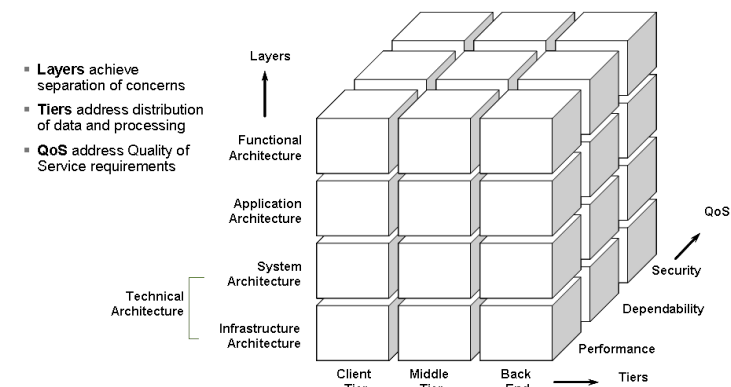
Enterprise Architecture – The Glue



Disciplines of Enterprise Architecture



Enterprise Architecture Governance Framework



The framework has been derived from and mapped to Industry standards such as Open Group's TOGAF and SEI's architecture initiatives; and derived from our Technical Consulting experiences

Read More at <http://www.infosys.com/services/systemintegration/EA-Governance-1.pdf>

# Ability to leverage on assets . . .

---

## Finding the value of intangibles

Company	Market cap.	Total assets	Ratio
Amazon	13.99B	3.25B	4.3
GM	17.65B	448.5B	0.04
MSFT	273.13B	92.3B	2.9
UPS	80.8B	33.0B	2.6

Source: Company reports and Forrester Research

Join us at

---

# Infosys' Reception

At 18:00 IST

# Win a Sony PSP 1004-K

# Stop

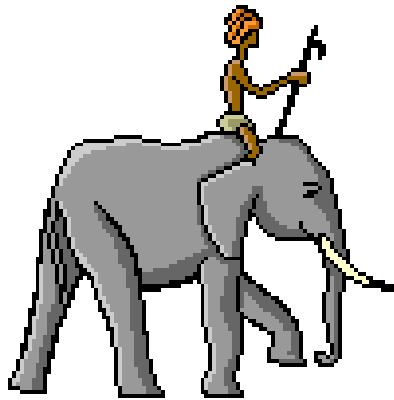
by our table to fill out a quiz and enter the lucky draw



Lucky draw on the 27th

Infosys®

Win in the flat world



Creating The  
Agile Elephant

Thank You

Questions ?

---

"The contents of this document are proprietary and confidential to Infosys Technologies Ltd. and may not be disclosed in whole or in part at any time, to any third party without the prior written consent of Infosys Technologies Ltd."

"© 2007 Infosys Technologies Ltd. All rights reserved. Copyright in the whole and any part of this document belongs to Infosys Technologies Ltd. This work may not be used, sold, transferred, adapted, abridged, copied or reproduced in whole or in part, in any manner or form, or in any media, without the prior written consent of Infosys Technologies Ltd."