



# Enterprise Architecture and IT in the 21<sup>st</sup> Century

# Agenda Slide

- Introduction
- What is 21<sup>st</sup> Century IT?
- ProSolveIT's 21<sup>st</sup> Century IT themes
- Stages in a successful approach

# Agenda Slide

- Introduction
- What is 21<sup>st</sup> Century IT?
- ProSolveIT's 21<sup>st</sup> Century IT themes
- Stages in a successful approach

# Introduction

- Business and IT alignment
  - Mapping of all IT initiatives to Business initiatives.
  - Critical to most enterprises.
  - Can it ever be achieved? If so how?
- IT initiatives/strategies
  - Lots: EA, SOA, single view of customer, rationalisation
  - What is right for YOU!
  - Must drive Business and IT alignment.
  - IT governance directs IT innovation from a business perspective.
  - Not created and fixed in stone - corrective action where necessary.
  - Aim: IT at the heart of business processes.
  - Aim: IT an enabler of the Business.
  - Aim: Not a poster on the wall.

# Agenda Slide

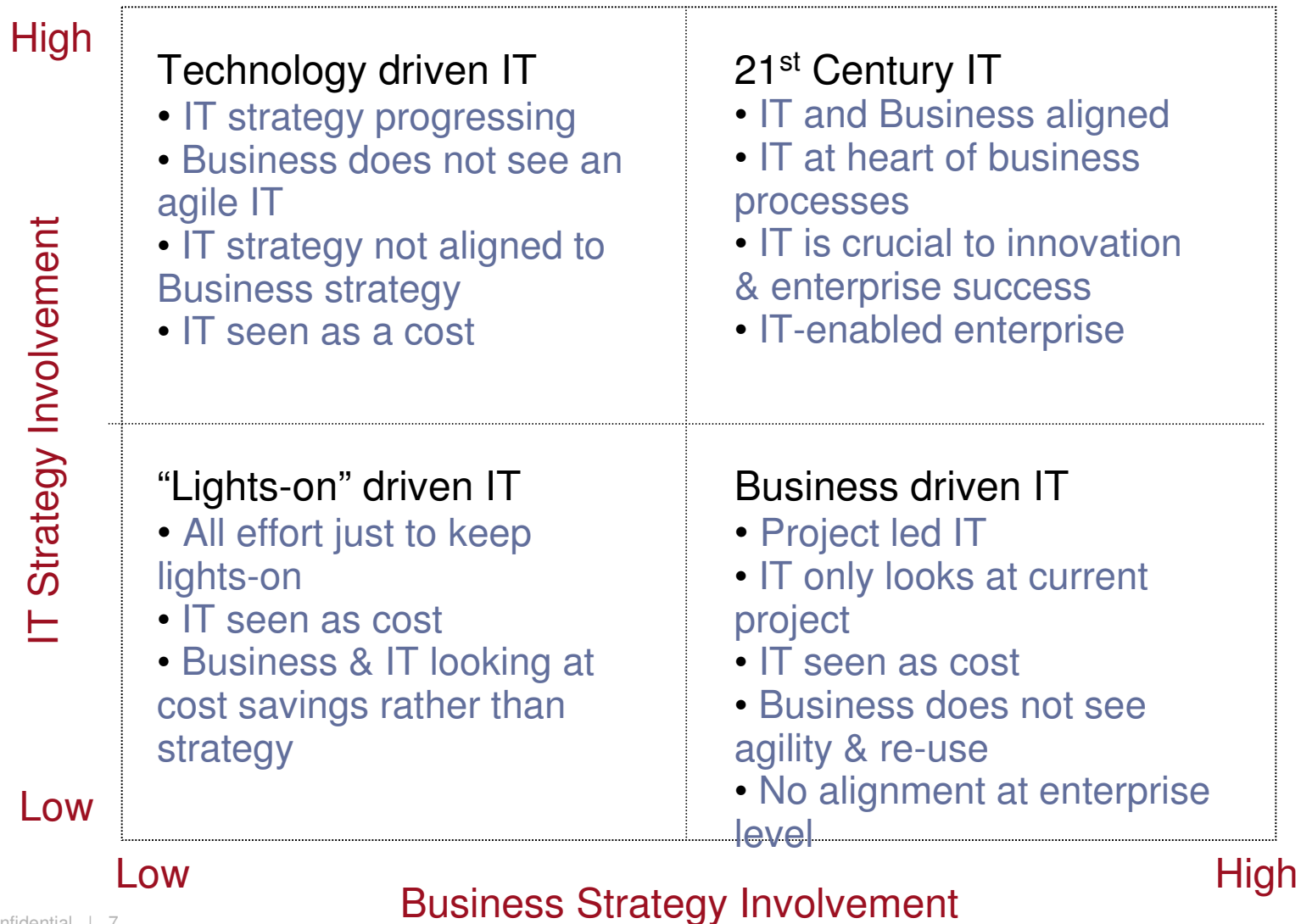
- Introduction
- **What is 21<sup>st</sup> Century IT?**
- ProSolveIT's 21<sup>st</sup> Century IT themes
- Stages in a successful approach

# 21<sup>st</sup> Century IT

“21<sup>st</sup> Century IT sees IT aligned to the Business. IT and Business alignment enables business processes and is critical to the enterprise and innovation.

IT strategy is linked to the Business strategy.”

# Where are companies today?

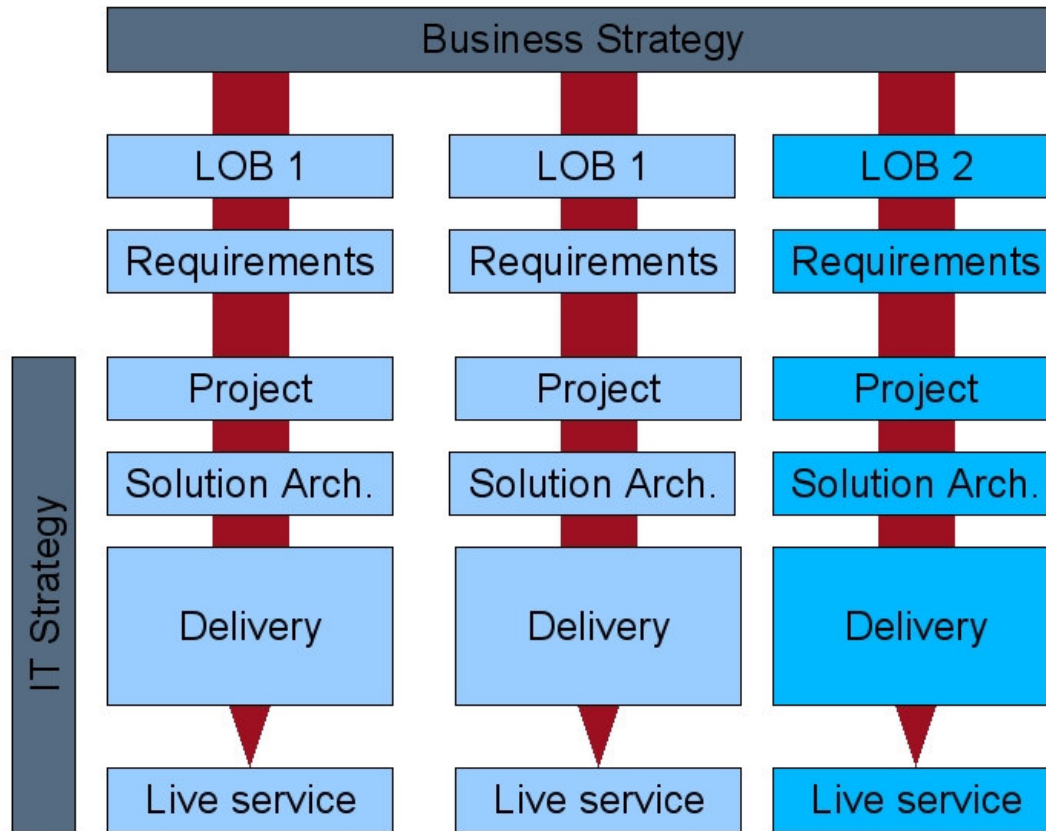


# Agenda Slide

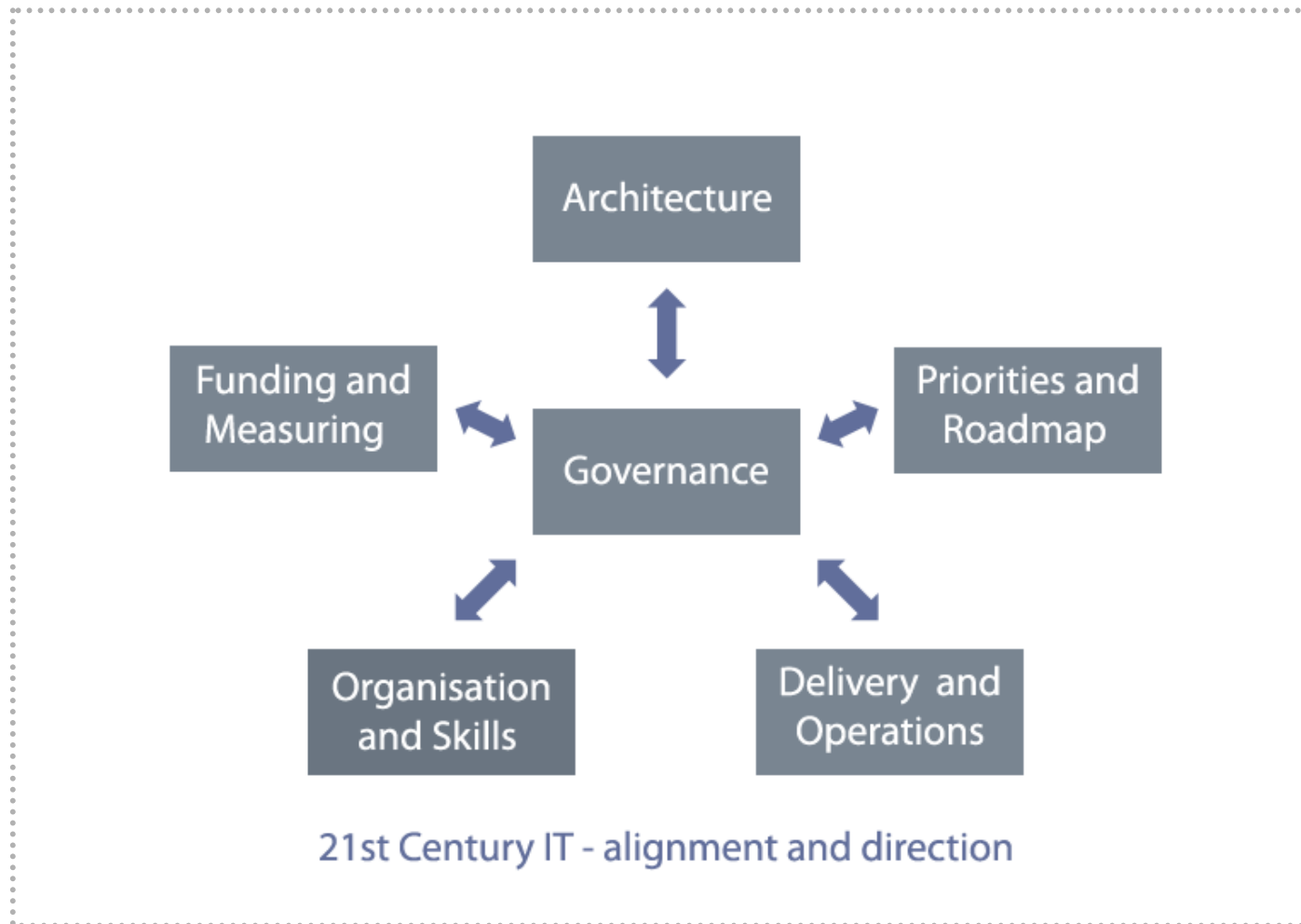
- Introduction
- What is 21<sup>st</sup> Century IT?
- ProSolveIT's 21<sup>st</sup> Century IT themes
- Stages in a successful approach



# Alignment and Direction



# 21<sup>st</sup> Century IT Themes



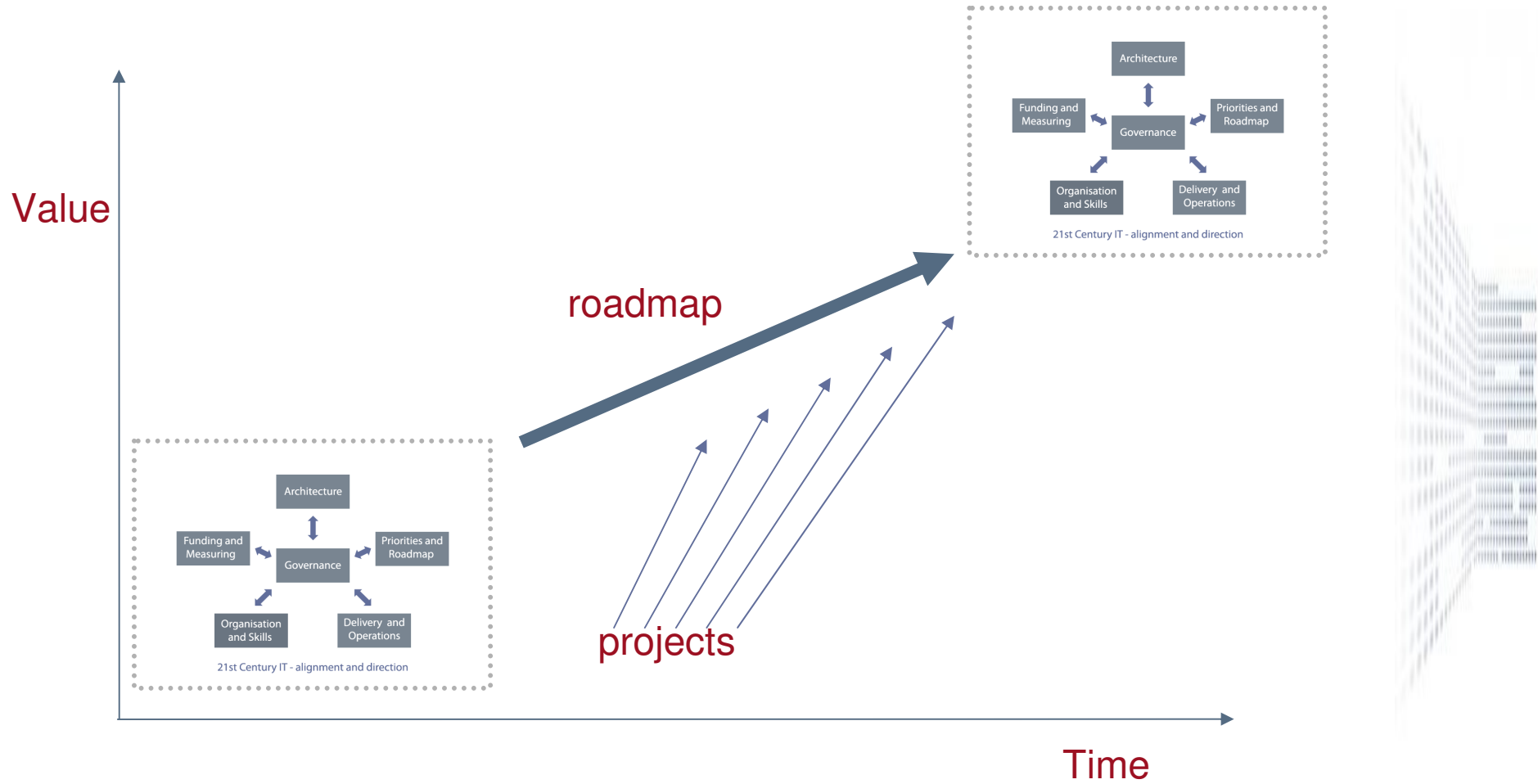
# Influences

IT Group  
Strategy

# Agenda Slide

- Introduction
- What is 21<sup>st</sup> Century IT?
- ProSolveIT's 21<sup>st</sup> Century IT themes
- Stages in a successful approach

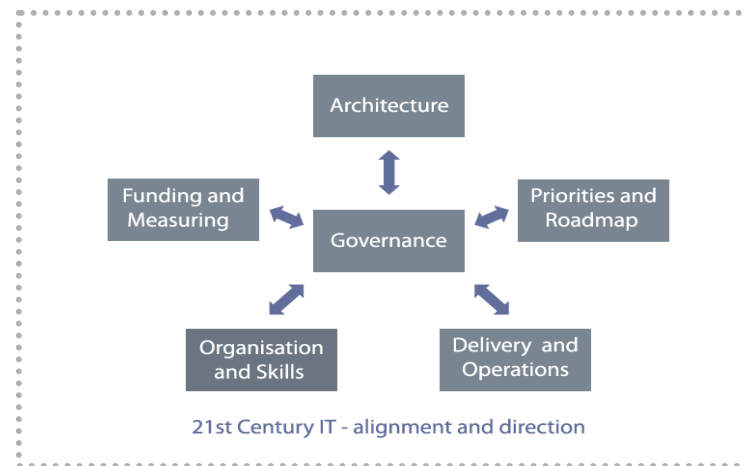
# Incremental

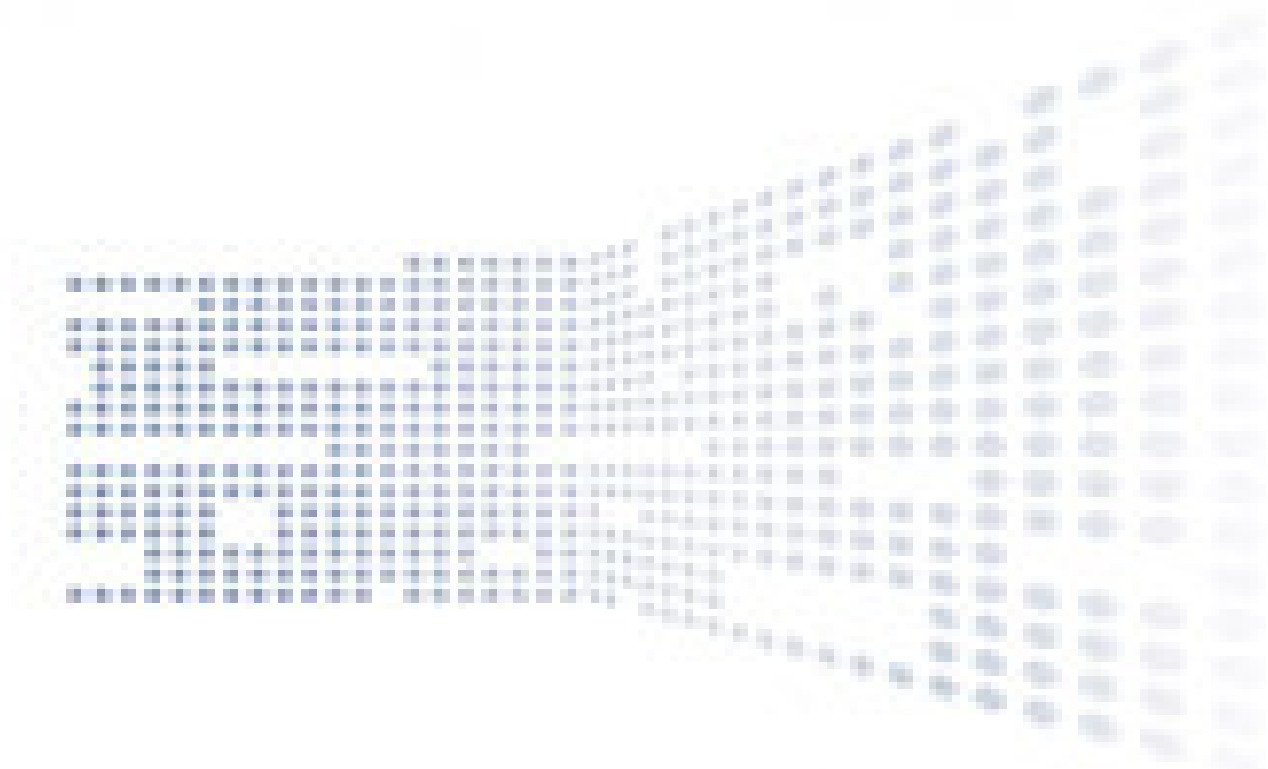


# 21<sup>st</sup> Century IT in Summary

- IT needs to be aligned to the Business.
- All themes must be considered.
- Watch out for dependencies.
- Incremental delivery with continuous feedback loop

baseline -> planning <-> delivery





Any  
Questions?